

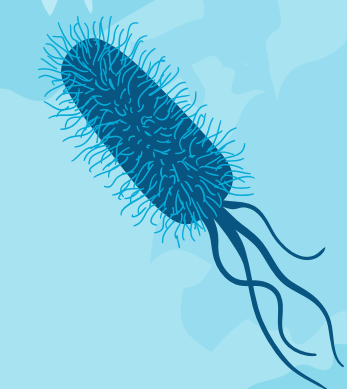
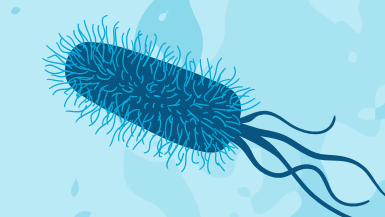
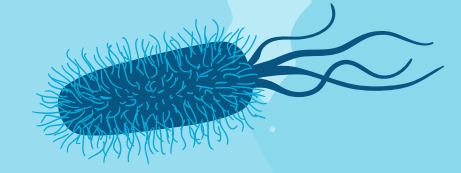
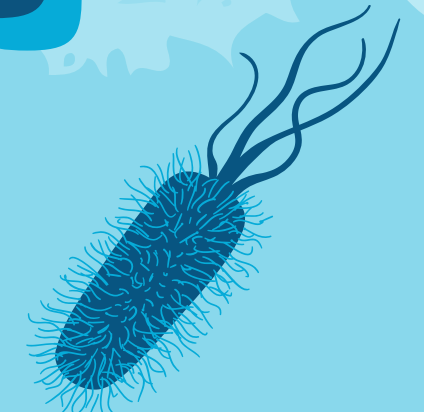
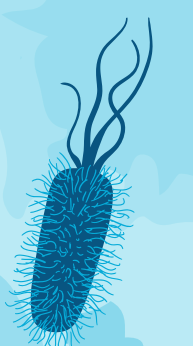
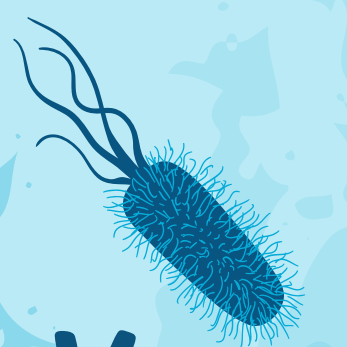
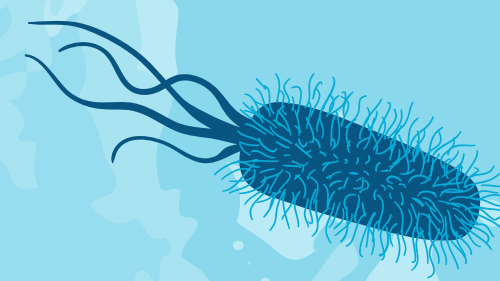
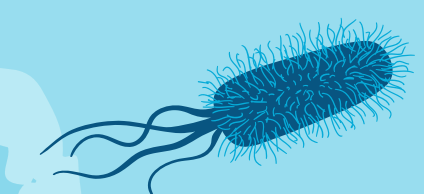
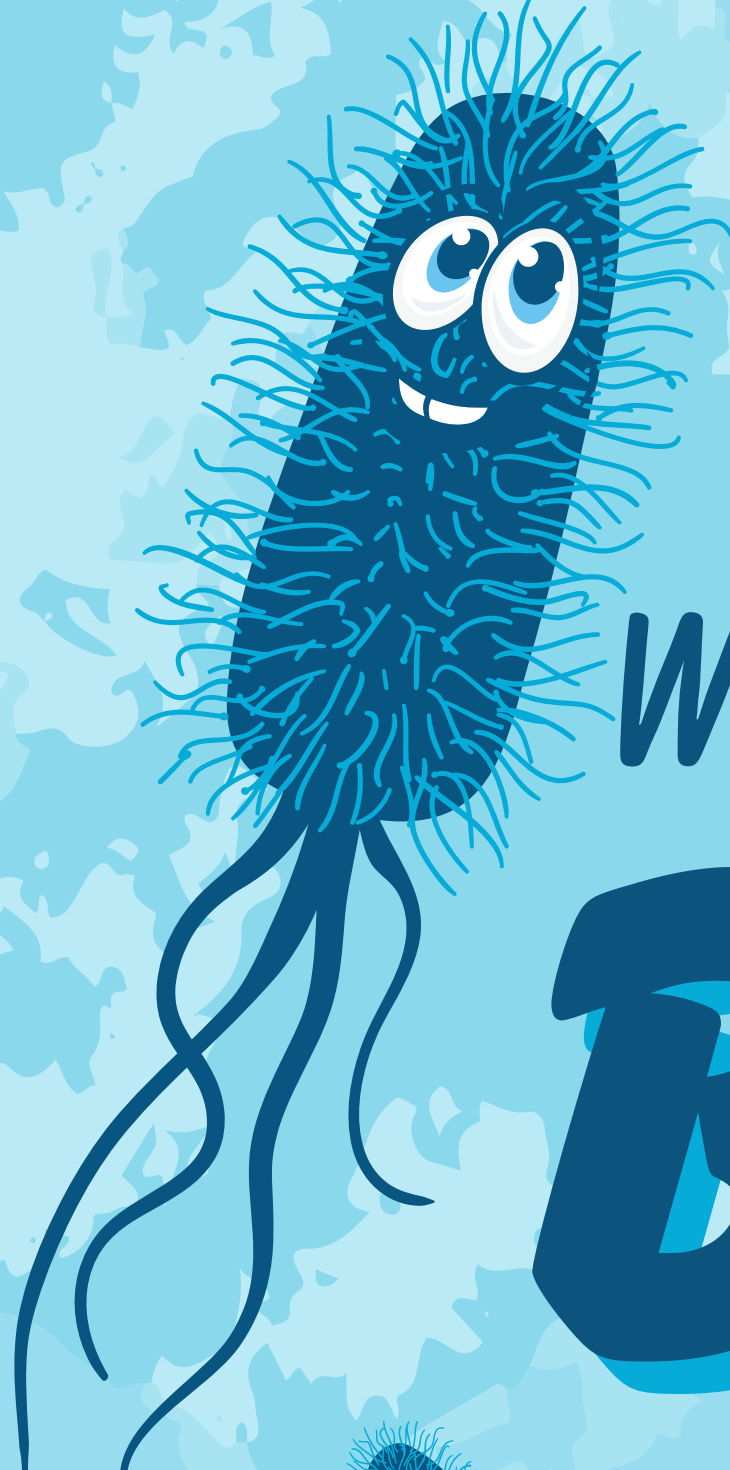


WINYAH RIVERS
ALLIANCE

WORLD WATER MONITORING DAY

BACTERIA

BLITZ



WEBINAR TOPICS

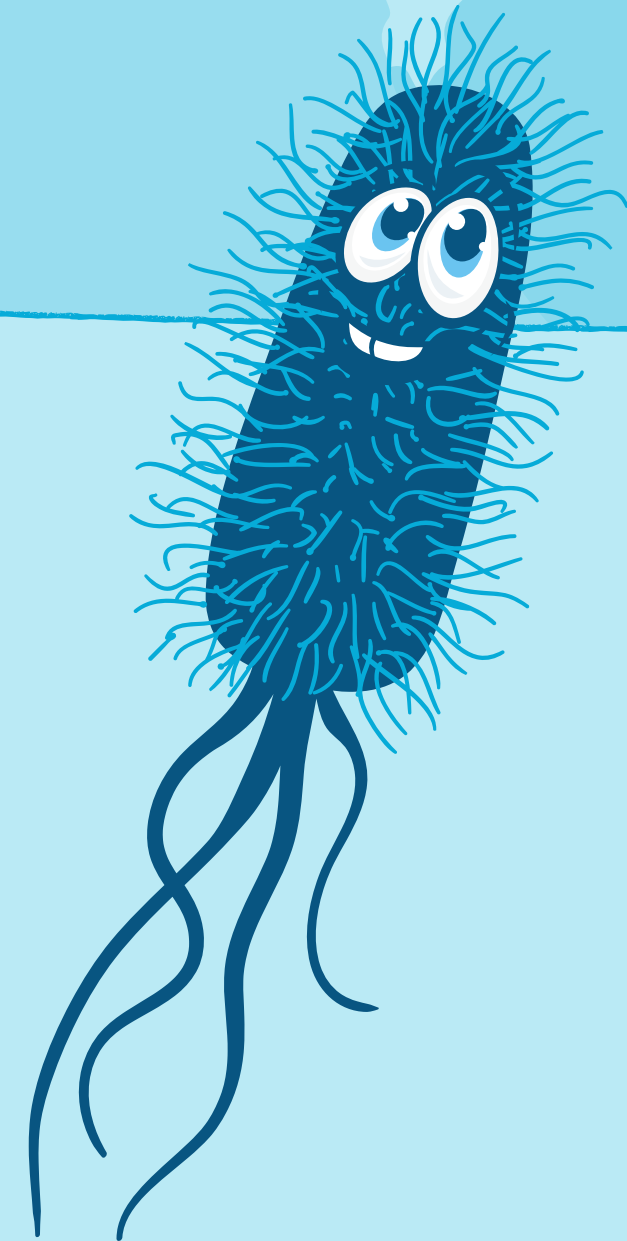
WHO IS WINYAH RIVERS ALLIANCE?

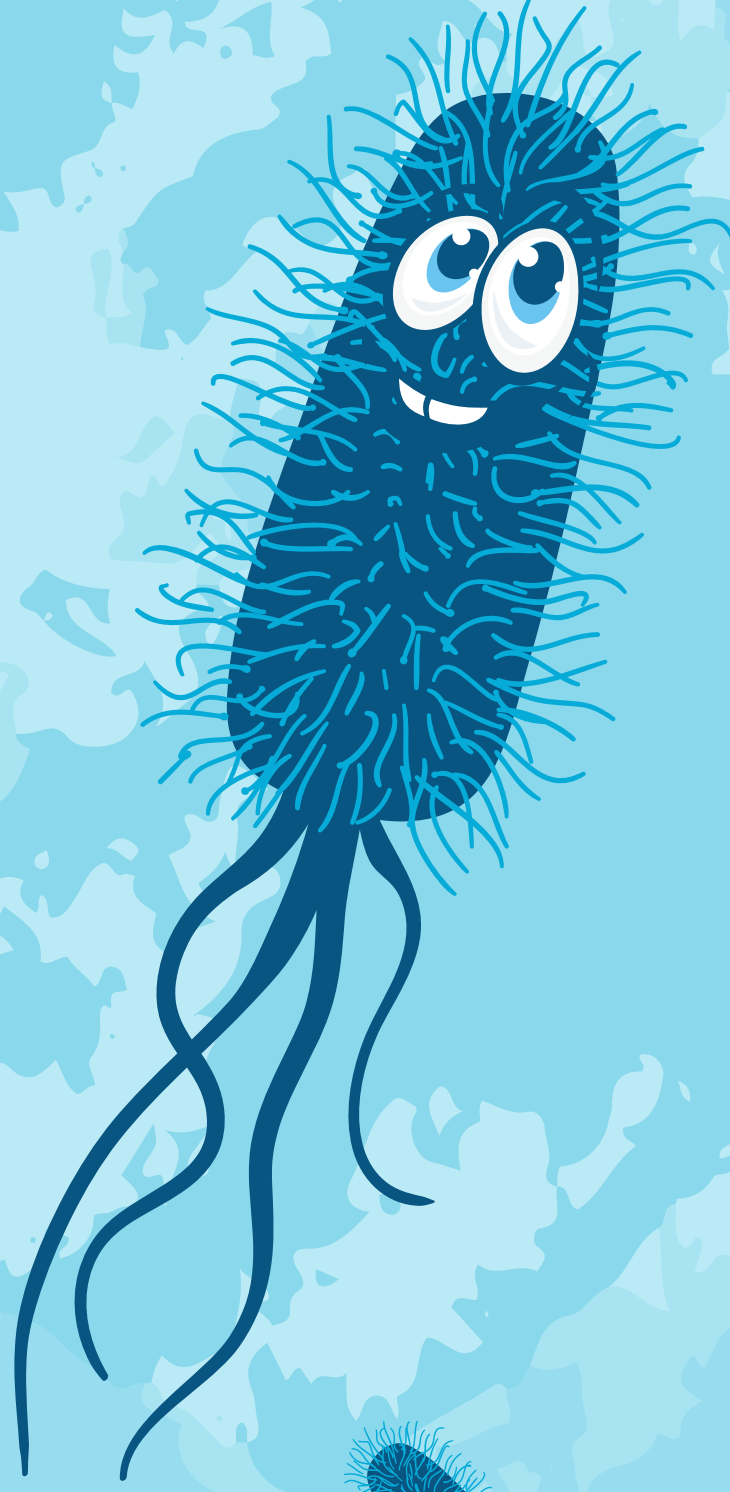
WHAT IS THE BACTERIA BLITZ?

WHY IS E. COLI IMPORTANT?

BACTERIA BLITZ RESULTS

NEXT STEPS

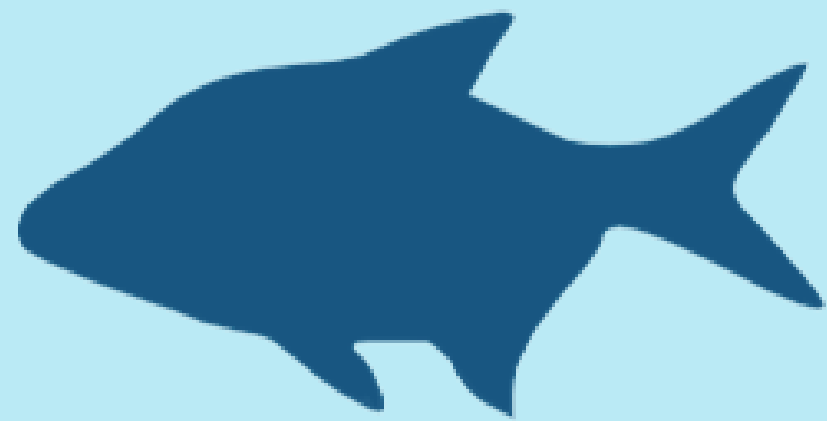




WHO IS WINYAH RIVERS?



WINYAH RIVERS ALLIANCE



FISHABLE



SWIMMABLE



DRINKABLE

WINYAH BAY WATERSHED

SEVEN RIVERS JOIN AT WINYAH BAY

*THIRD LARGEST BASIN ON THE EAST
COAST*

COVERS 11,700 SQUARE MILES



MEET YOUR RIVERKEEPERS



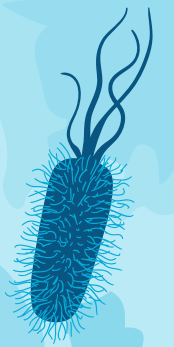
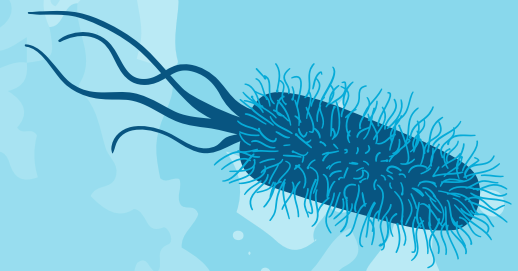
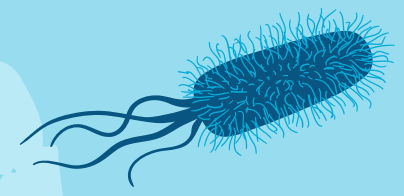
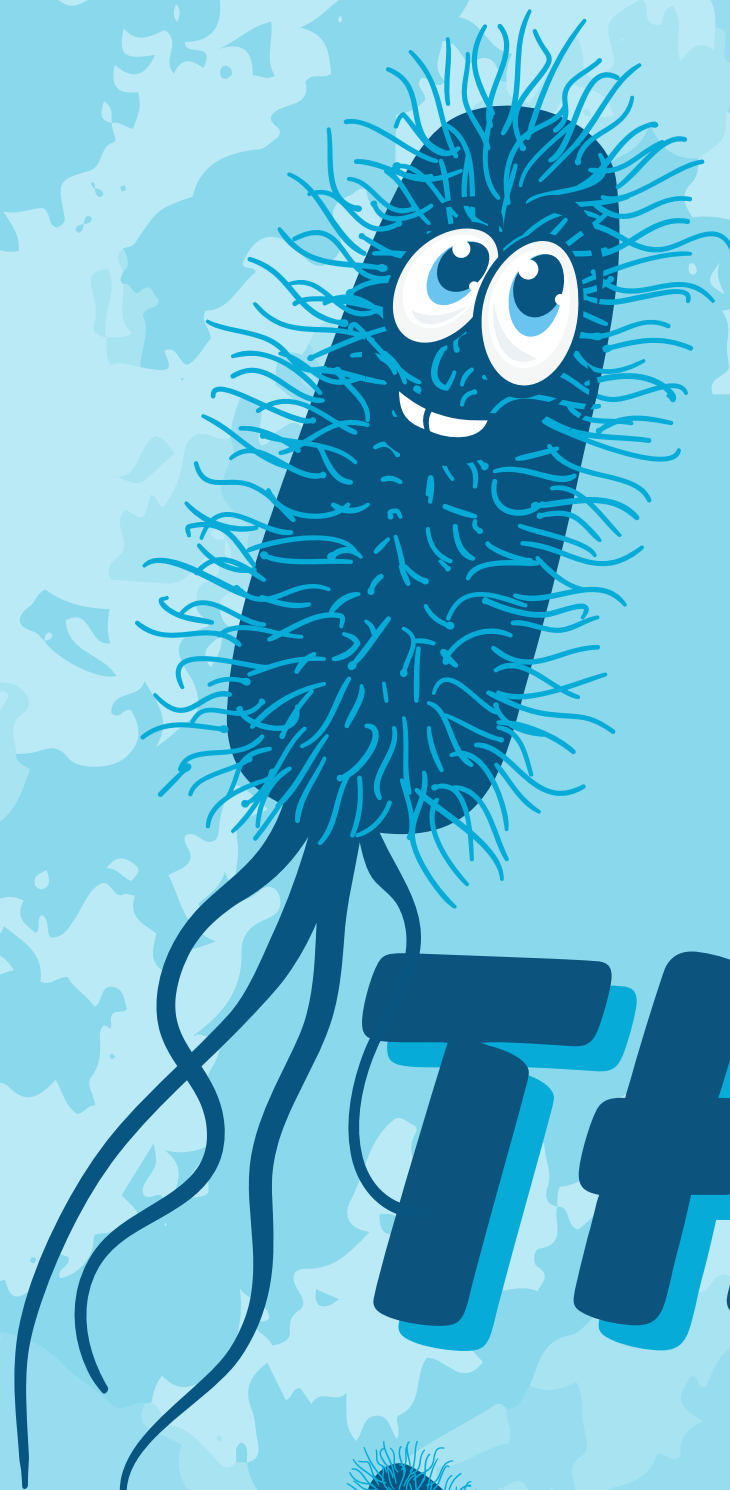
CARA SCHILDTKNECHT
WACCAMAW RIVERKEEPER



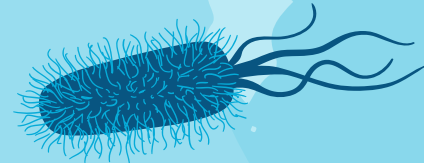
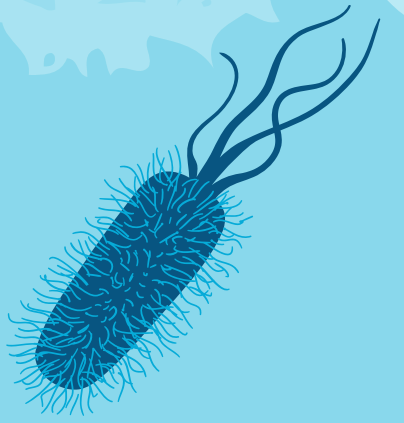
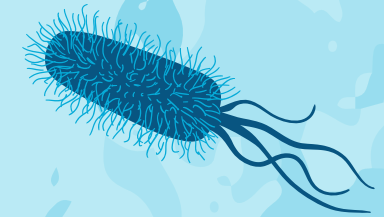
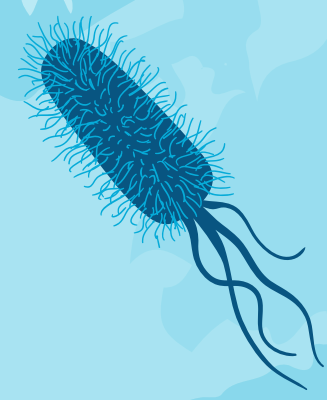
JEFFERSON CURRIE II
LUMBER RIVERKEEPER



ERIN DONMOYER
BLACK-SAMPIT RIVERKEEPER



WHAT IS THE BACTERIA BLITZ?



WORLD WATER MONITORING DAY

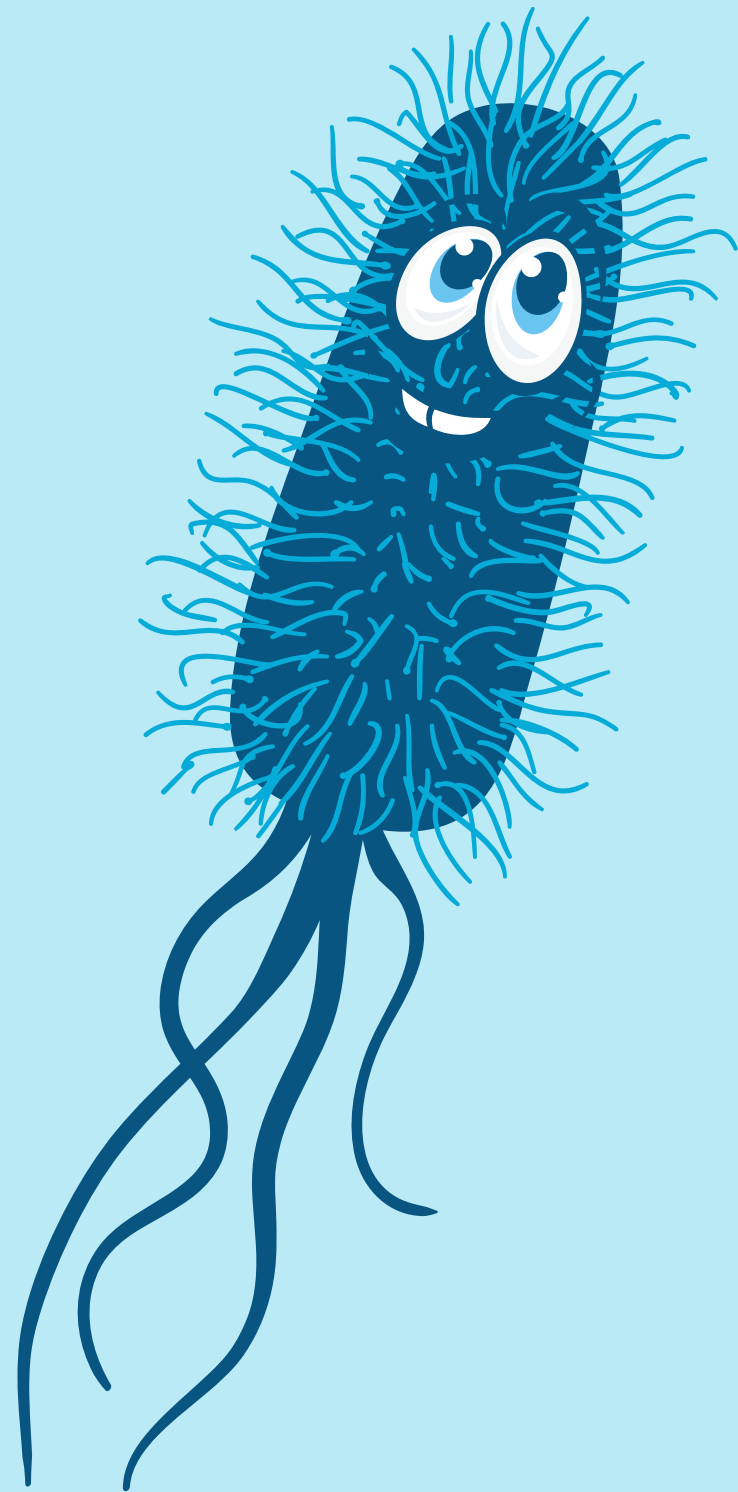
*OUR PARTNERS AT EARTHECHO INTERNATIONAL HOST
WORLD WATER MONITORING DAY EACH YEAR ON SEPTEMBER 18TH.*

WINYAH RIVERS CELEBRATES WITH OUR BACTERIA BLITZ.

*ADDITIONAL SAMPLING KITS WERE PROVIDED BY OUR AMAZING
PARTNERS!*



WHY THE BACTERIA BLITZ



CITIZEN SCIENCE

ENGAGES LOCAL COMMUNITY MEMBERS IN DATA COLLECTION THROUGH CITIZEN SCIENCE.

COMMUNITY EDUCATION

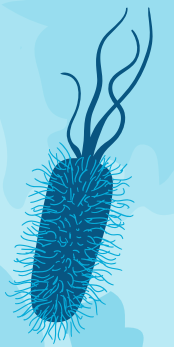
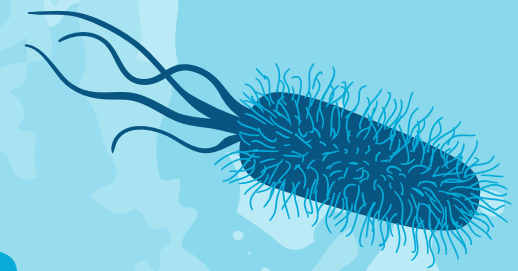
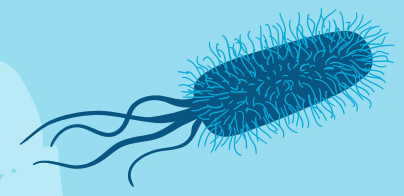
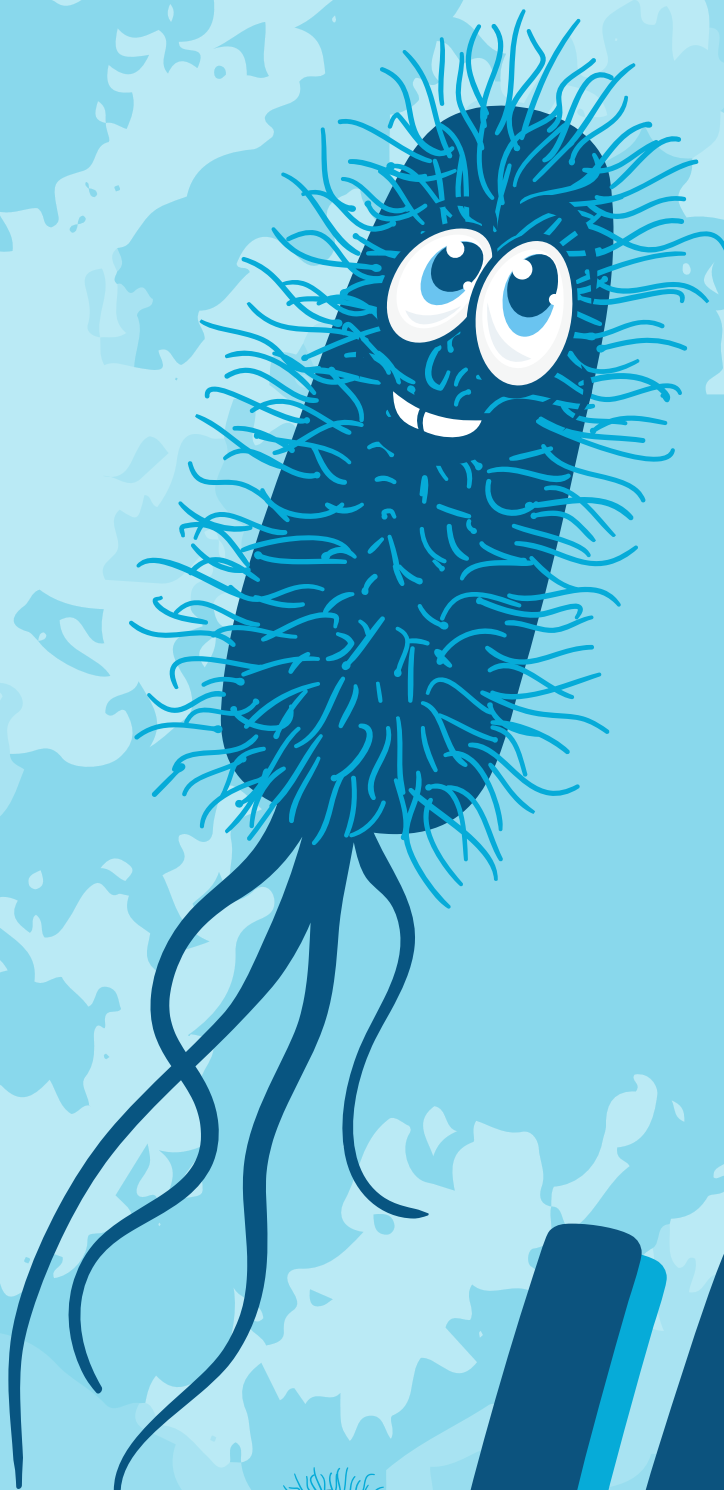
OPPORTUNITY TO PROVIDE EDUCATIONAL OUTREACH ON THE TOPIC OF FECAL BACTERIA POLLUTION.

WATERSHED WIDE

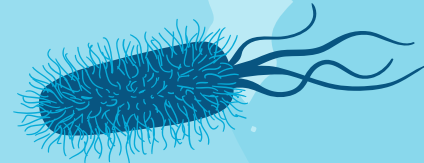
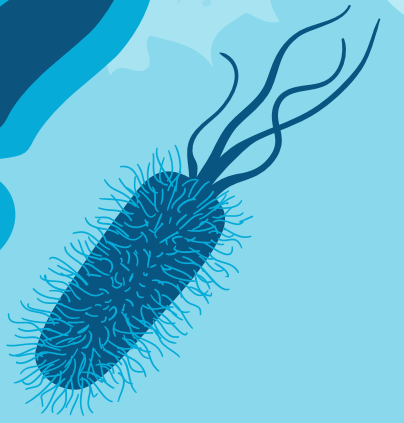
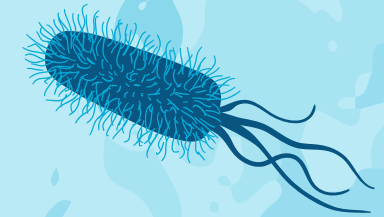
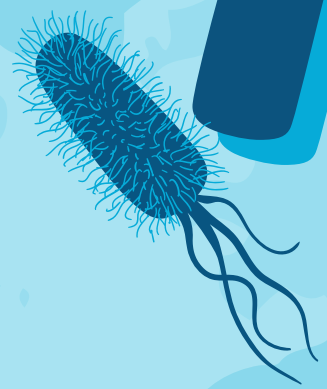
PROJECT COVERS THE ENTIRE GREATER WINYAH BAY WATERSHED AND ALL SEVEN RIVERS.

ACCESSIBLE ACTIVITY

ANYONE CAN PARTICIPATE IN THE BACTERIA BLITZ! IT MAKES SCIENCE FUN AND EASY.



WHY IS E. COLI IMPORTANT?



WHY E. COLI?

EASY TO SAMPLE

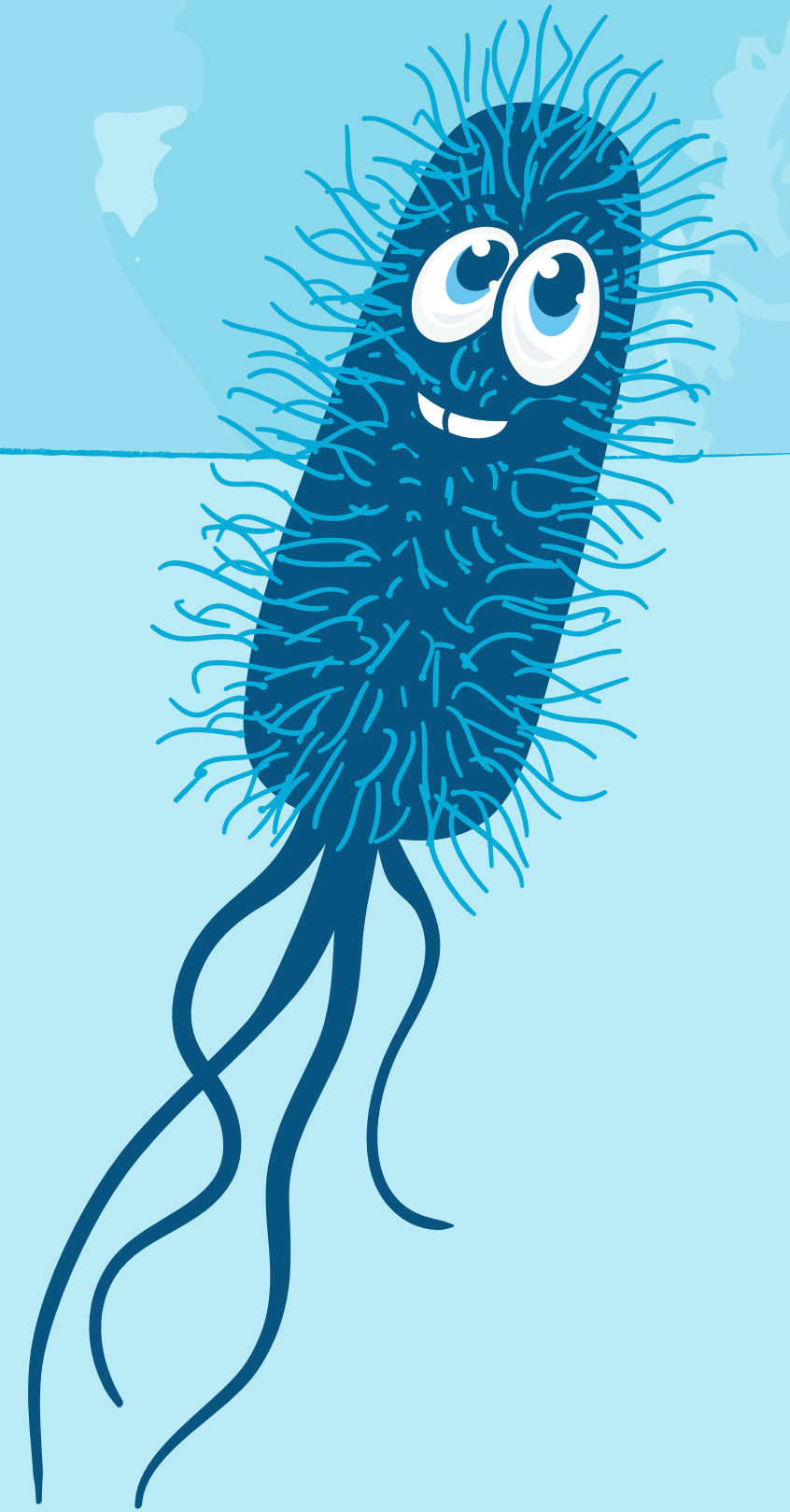
UNLIKE PATHOGENS AND VIRUSES, E. COLI IS EASY TO SAMPLE.

FAST ANALYSIS

ANALYSIS CAN BE DONE IN 24 HOURS FOR FAST RESULTS.

GOOD INDICATOR

E. COLI IS A THE EPA'S RECOMMENDED SPECIES TO USE TO INDICATE THE POTENTIAL FOR SICKNESS CAUSED BY RECREATING IN WATERS WITH FECAL CONTAMINATION.





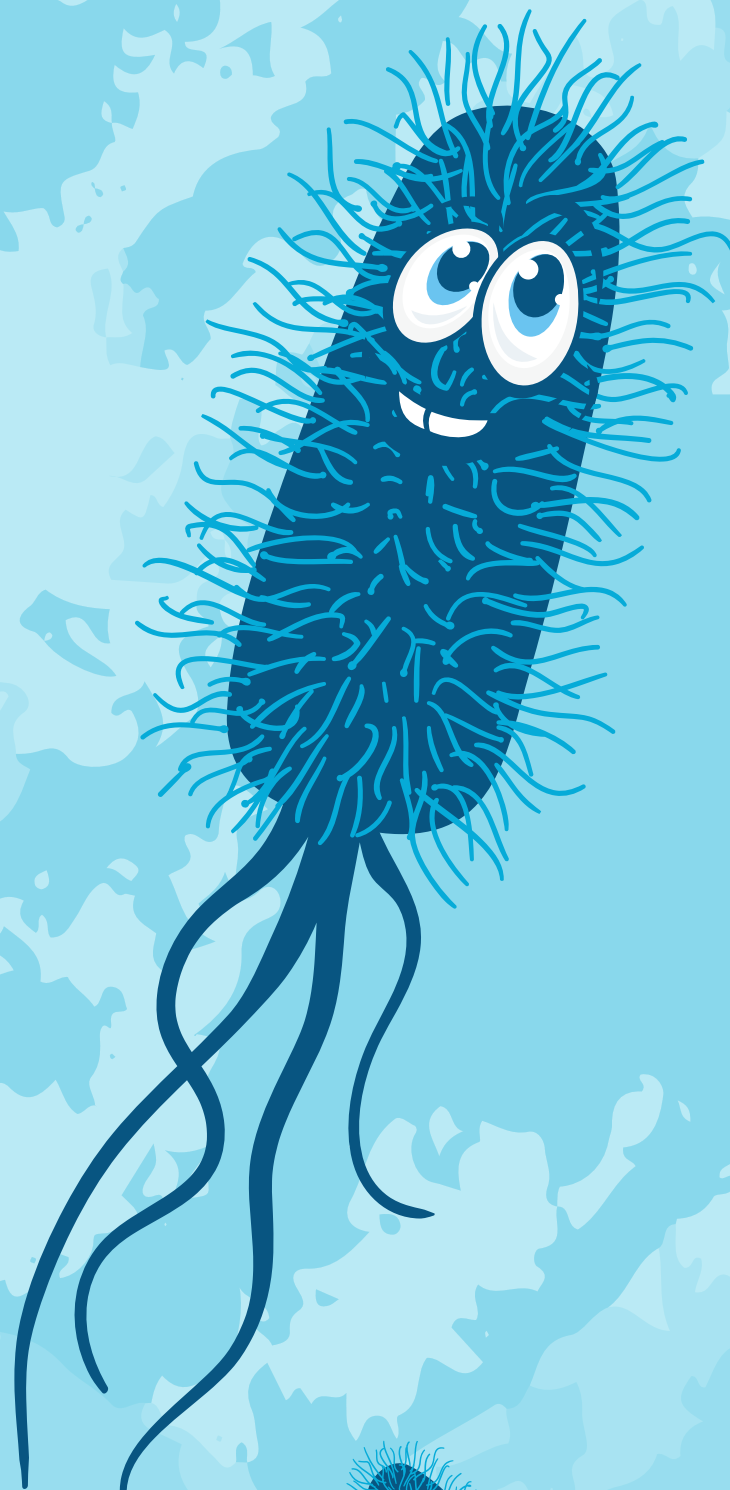
235

*235 CFU/100ML OR MPN/100ML IS THE
EPA'S BEACH ACTION VALUE FOR E. COLI
CONCENTRATIONS IN FRESHWATER*

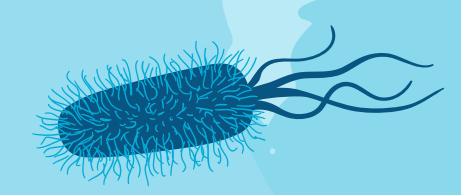
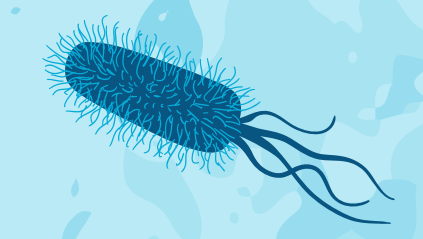
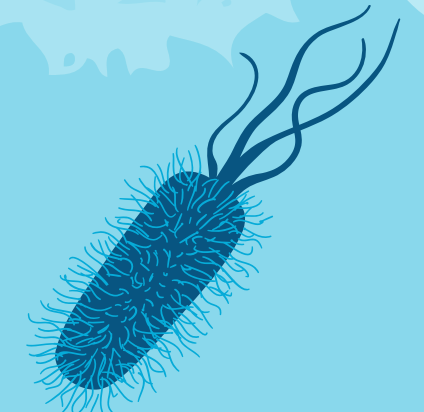
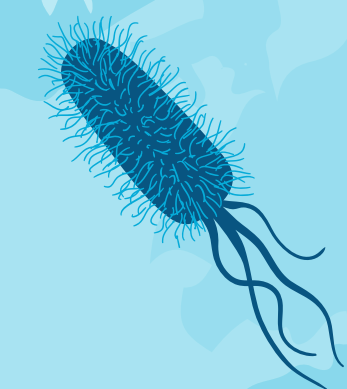
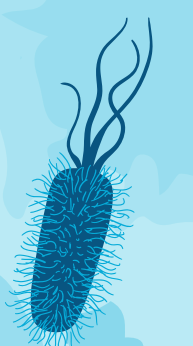
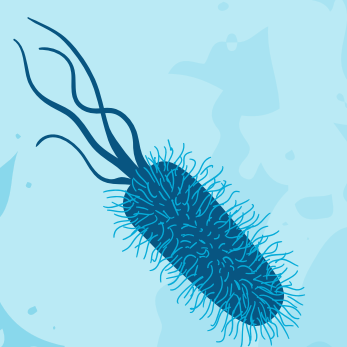
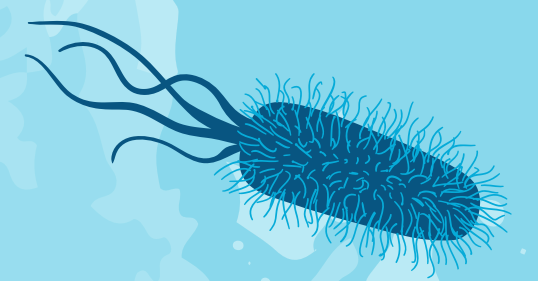
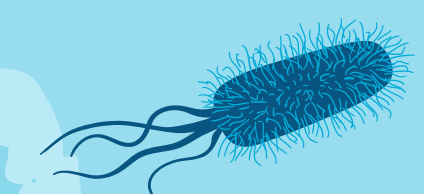


36

*THE EPA'S BAV IS EVALUATED AT THE
ESTIMATED RISK OF ILLNESS FOR 36 OUT
OF 1,000 PRIMARY CONTACT RECREATORS*



BACTERIA BLITZ RESULTS



HOW WE DID OUR BACTERIA BLITZ



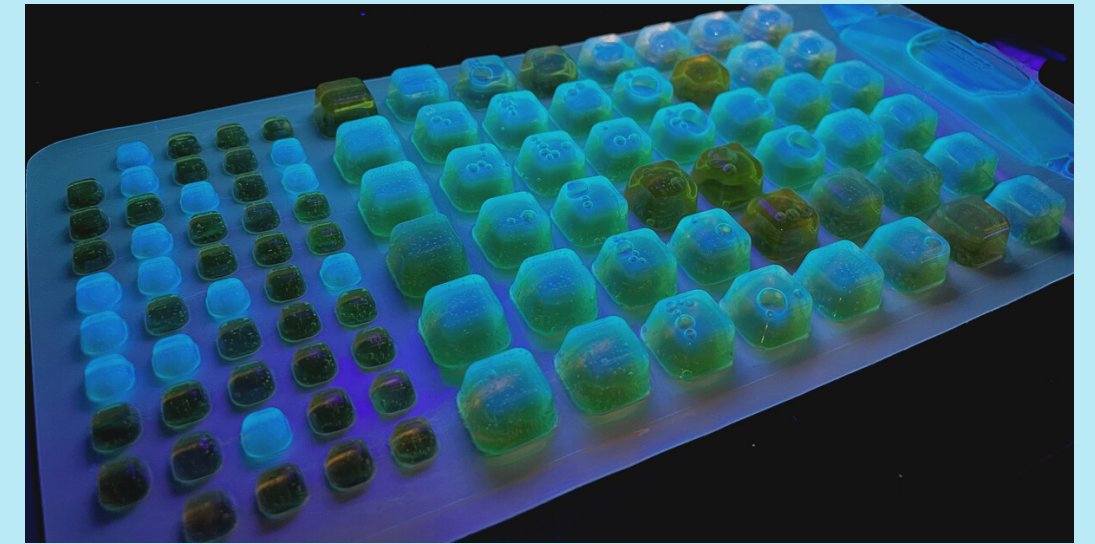
SELECT SAMPLING SITES

PARTICIPANTS SELECTED THEIR SAMPLING SITES THROUGHOUT THE GREATER WINYAH BAY WATERSHED



COLLECT WATER SAMPLES

PARTICIPANTS COLLECTED WATER SAMPLES DURING THE MORNING OF SEPTEMBER 16TH, 2023



ANALYZE WATER SAMPLES

WINYAH RIVERS STAFF PERFORMED SAMPLE ANALYSIS TO DETERMINE FECAL BACTERIA CONCENTRATIONS

BY THE NUMBERS



1

**DAY OF
SAMPLING**



53

**BACTERIA
BLITZERS**

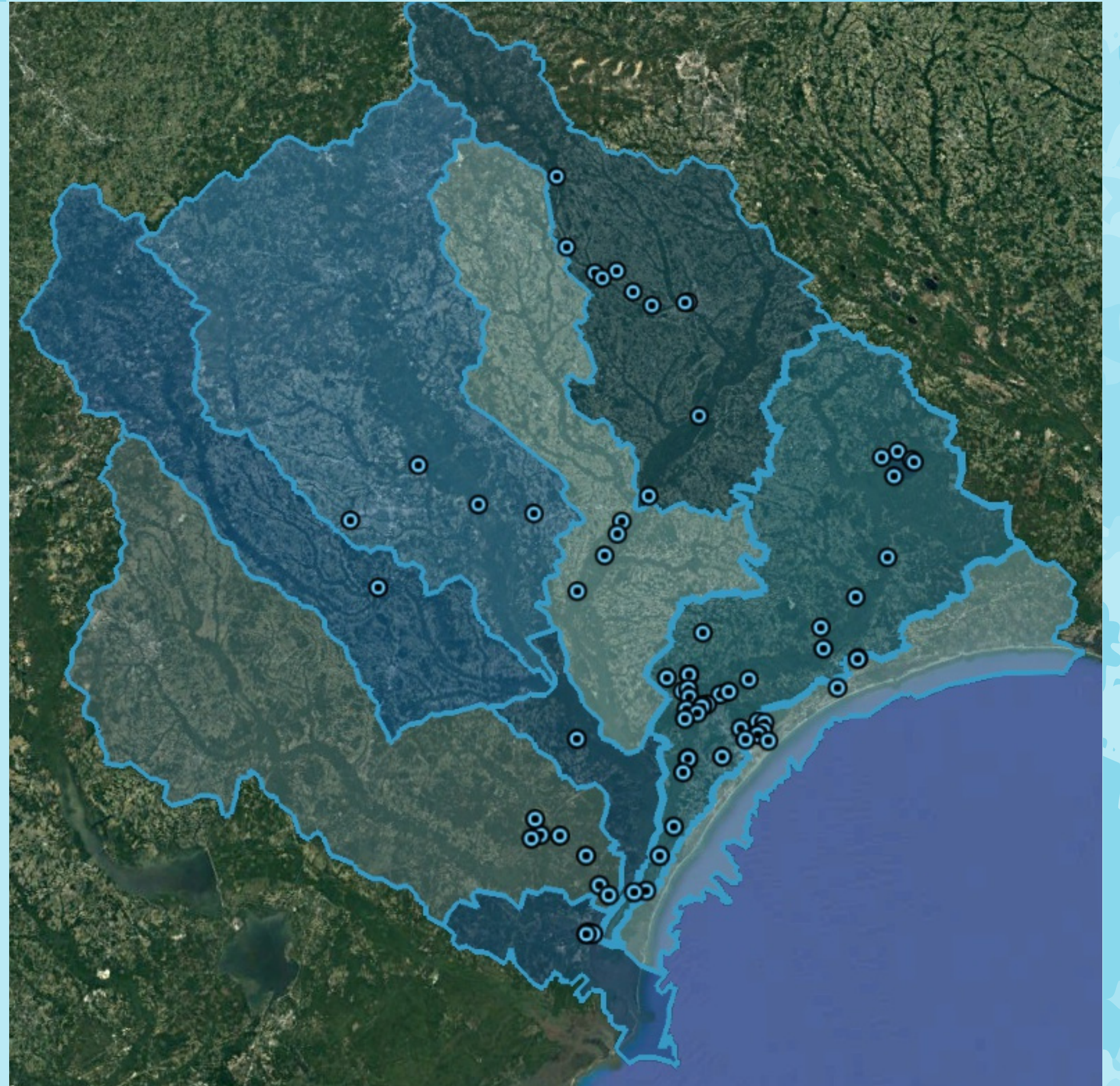


75

**SAMPLES
COLLECTED**

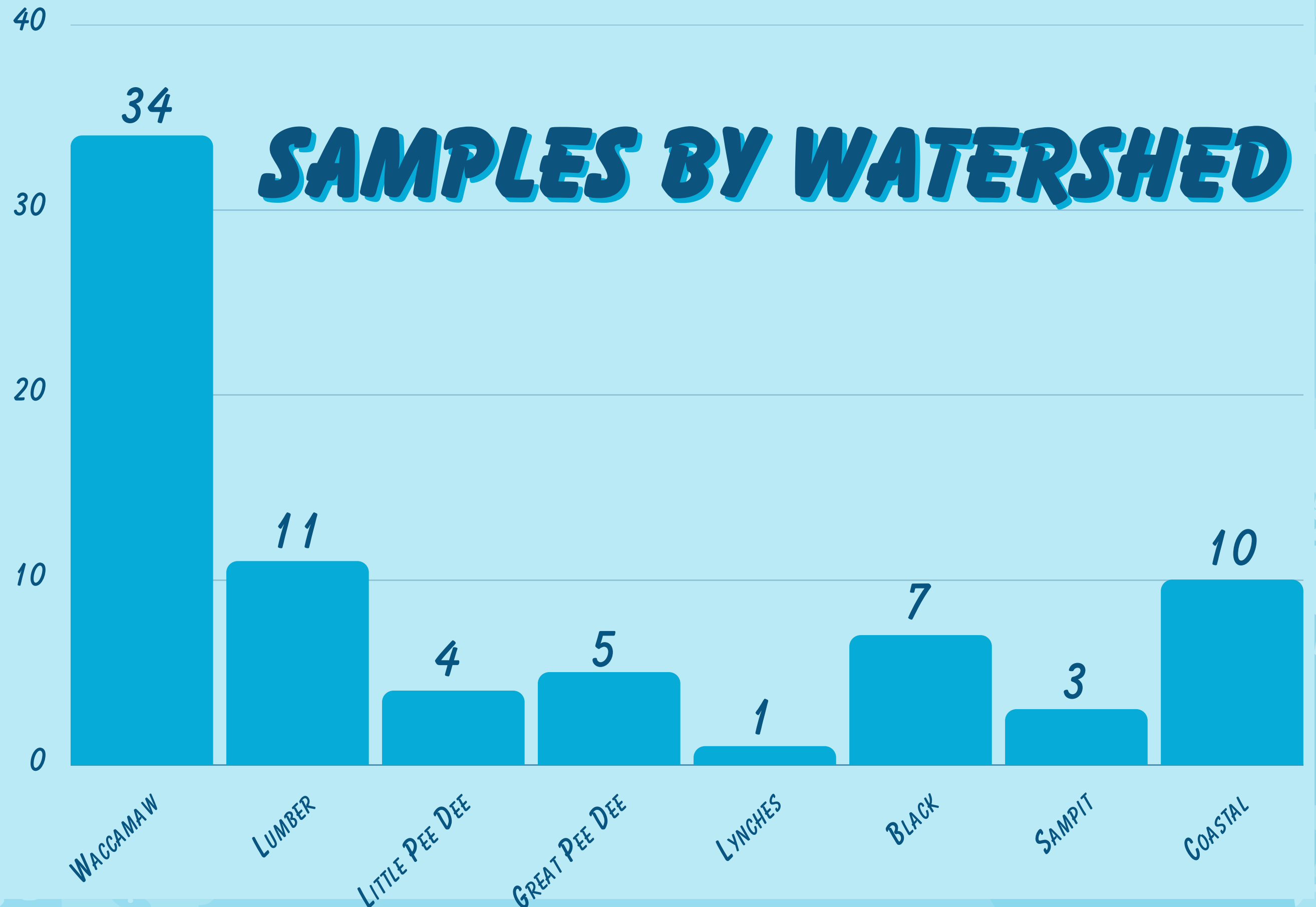
MAP OF SAMPLING SITES

*SITES WERE SAMPLED ACROSS ALL
SEVEN RIVERS AS WELL AS THE
COASTAL WATERSHED*



SAMPLES WERE COLLECTED FROM ALL OF OUR 7 WINYAH BAY WATERSHEDS

ADDITIONALLY, SAMPLES WERE COLLECTED IN THE COASTAL WATERSHED

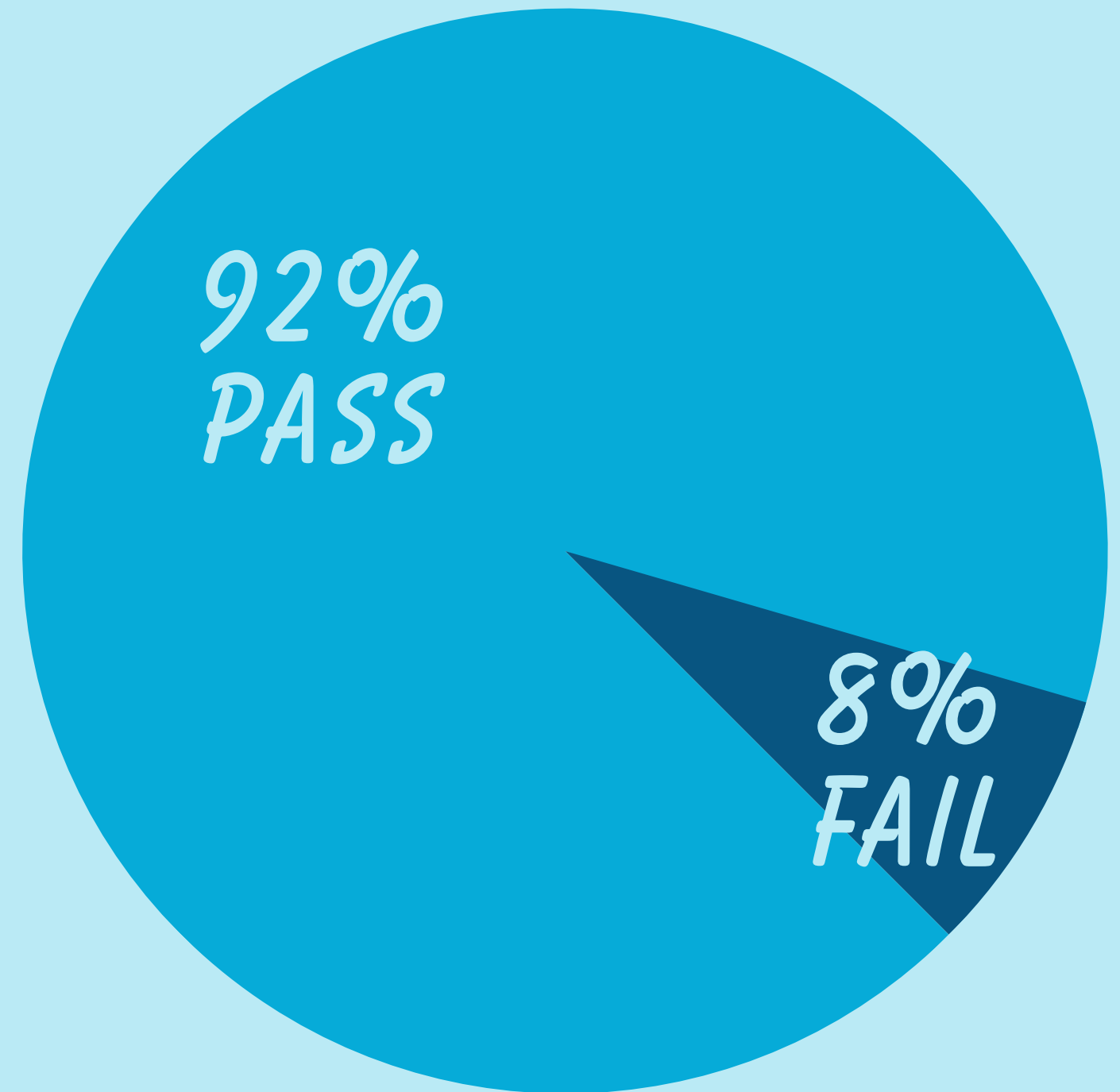


PASS/FAIL RATES

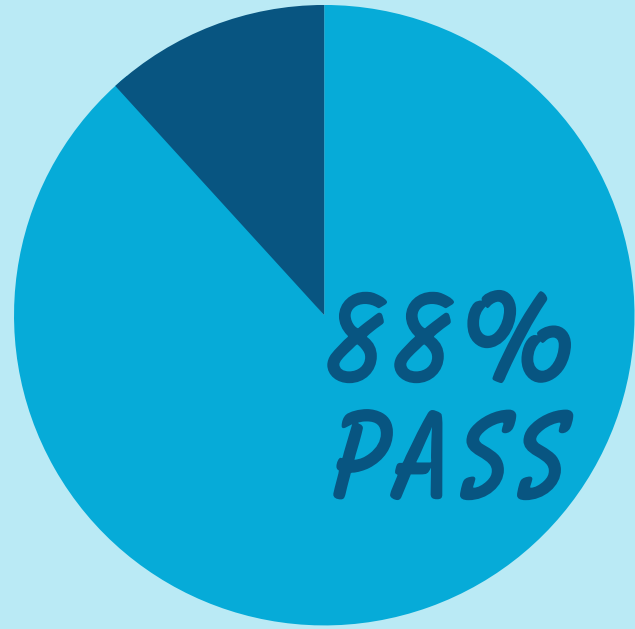
75 *SAMPLES*
WERE ANALYZED

69 *PASSED*
THE WATER QUALITY STANDARD

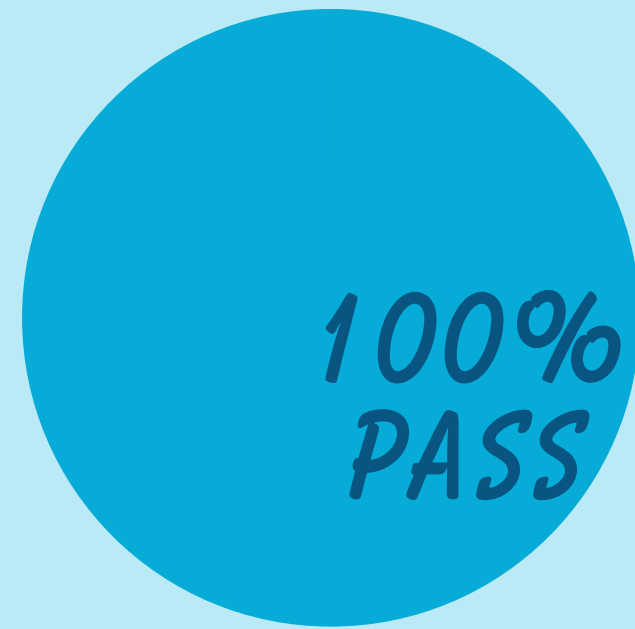
6 *FAILED*
THE WATER QUALITY STANDARD



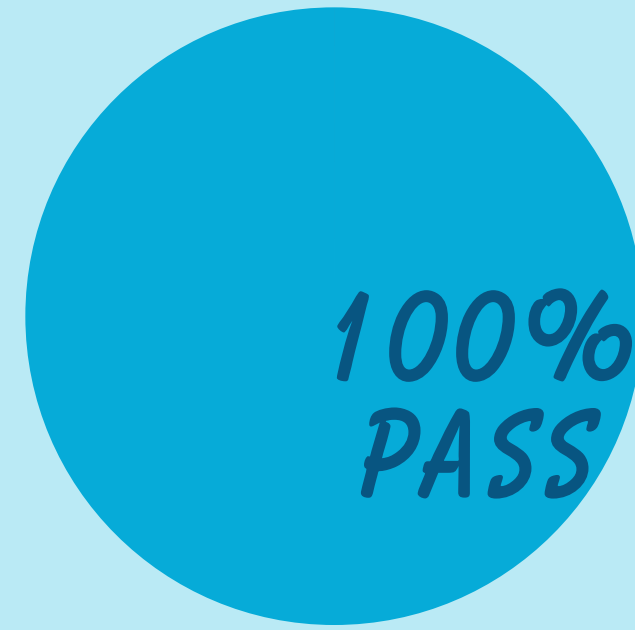
*WACCAMAW
WATERSHED*



*LUMBER
WATERSHED*



*LITTLE PEE DEE
WATERSHED*



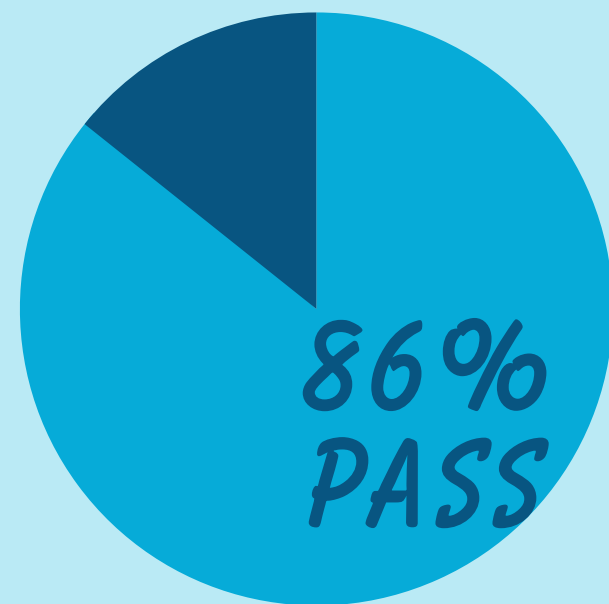
*GREAT PEE DEE
WATERSHED*



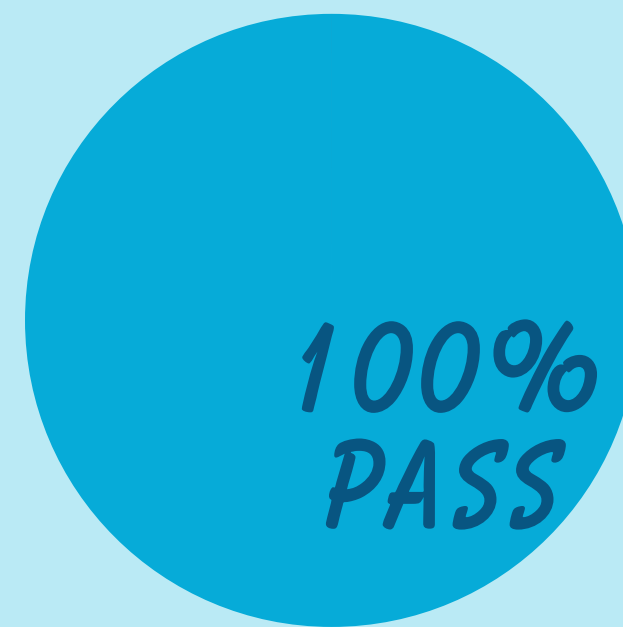
*LYNCHES
WATERSHED*



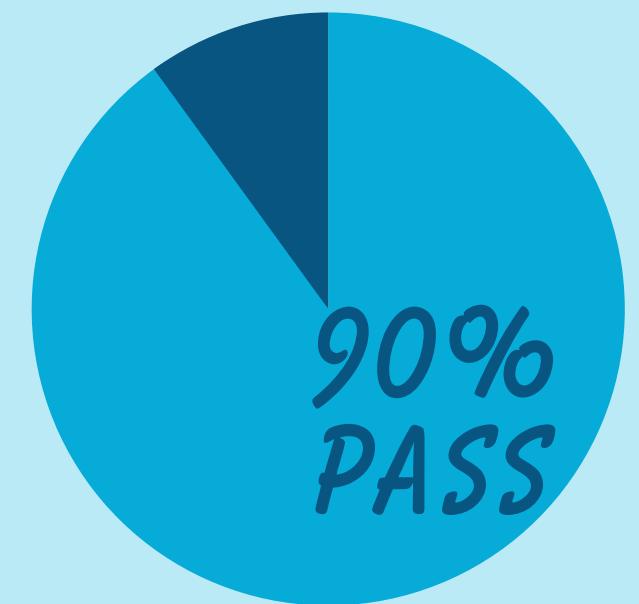
*BLACK
WATERSHED*



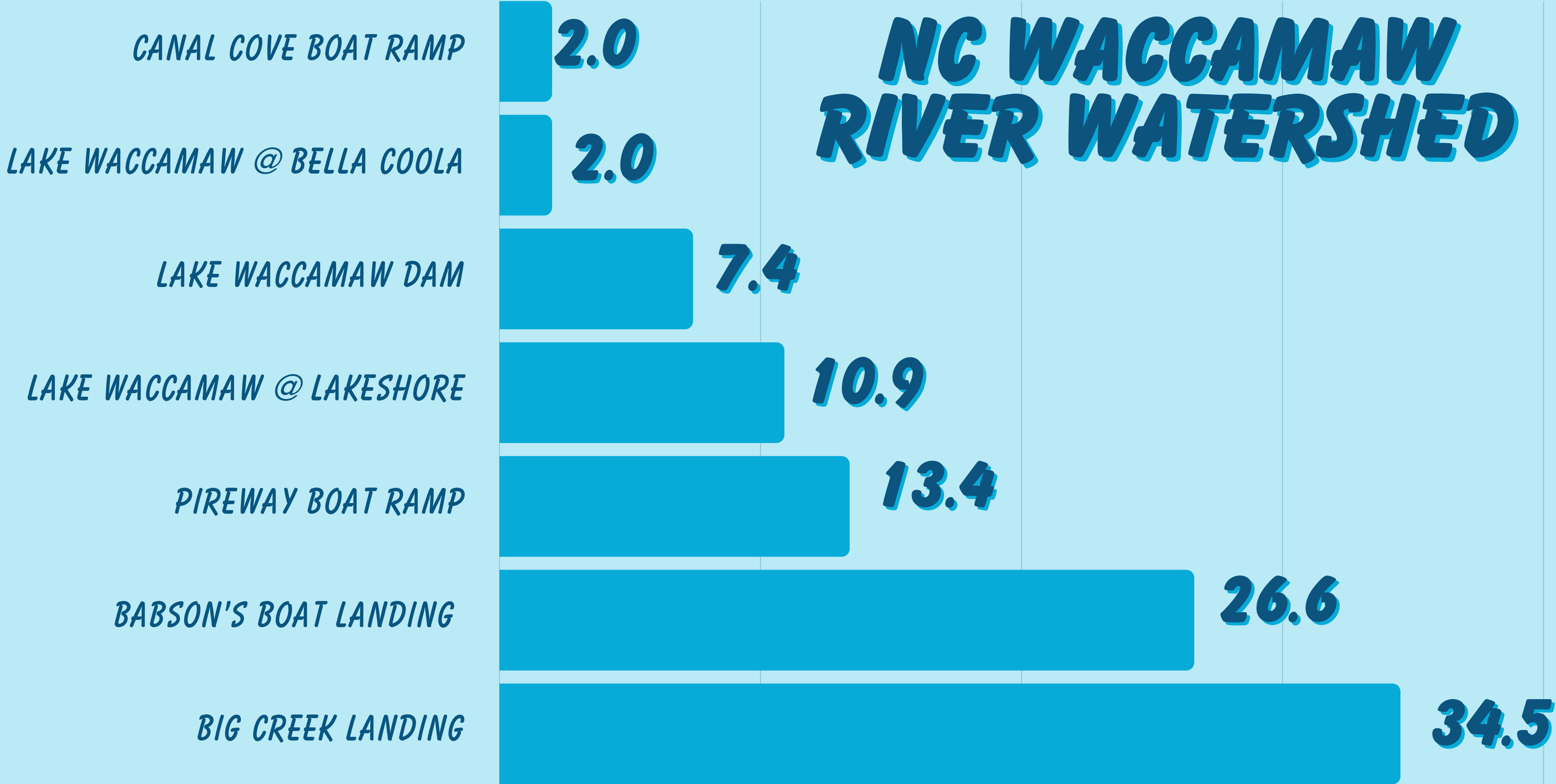
*SAMPIT
WATERSHED*



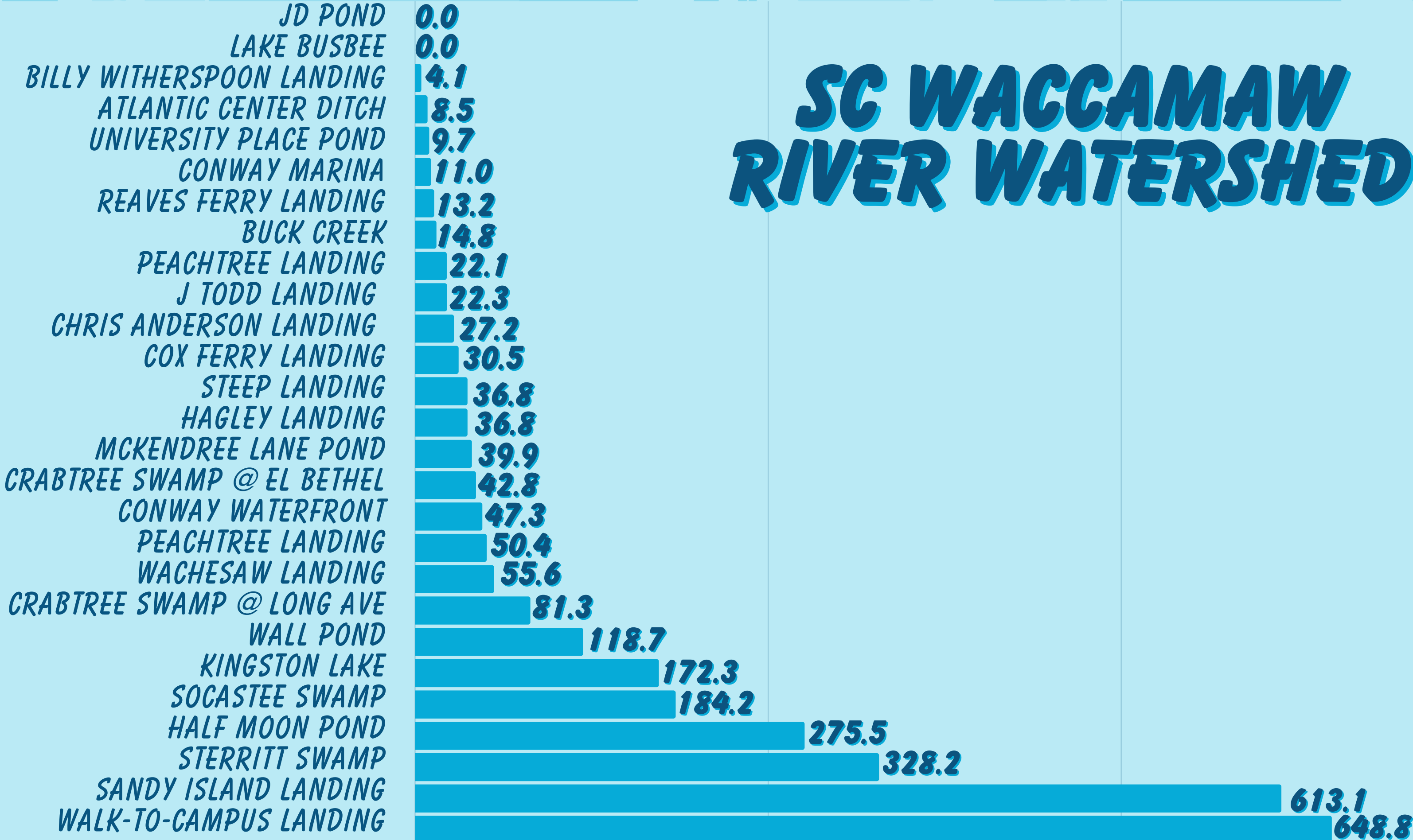
*COASTAL
WATERSHED*



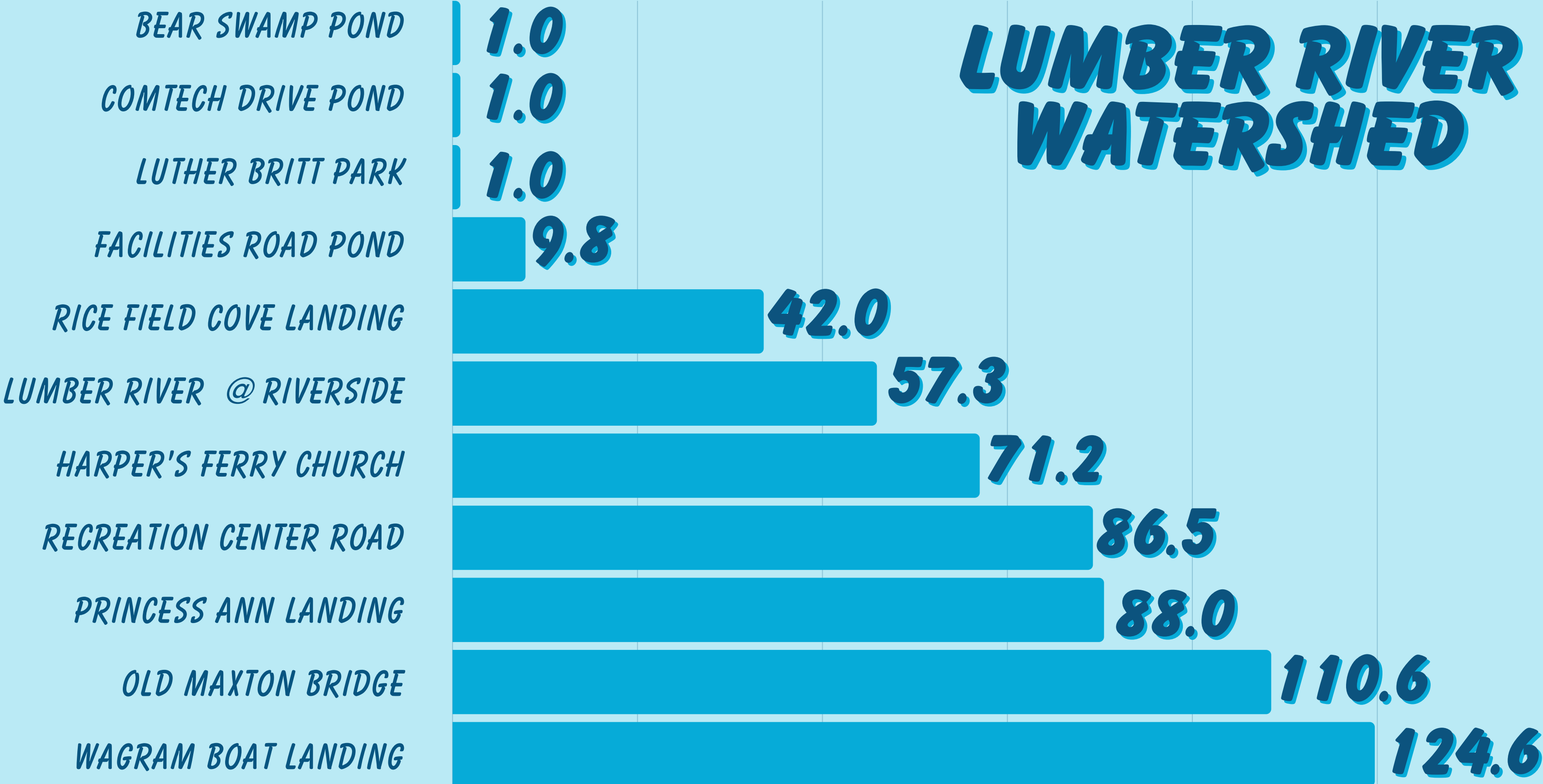
NC WACCAMAW RIVER WATERSHED



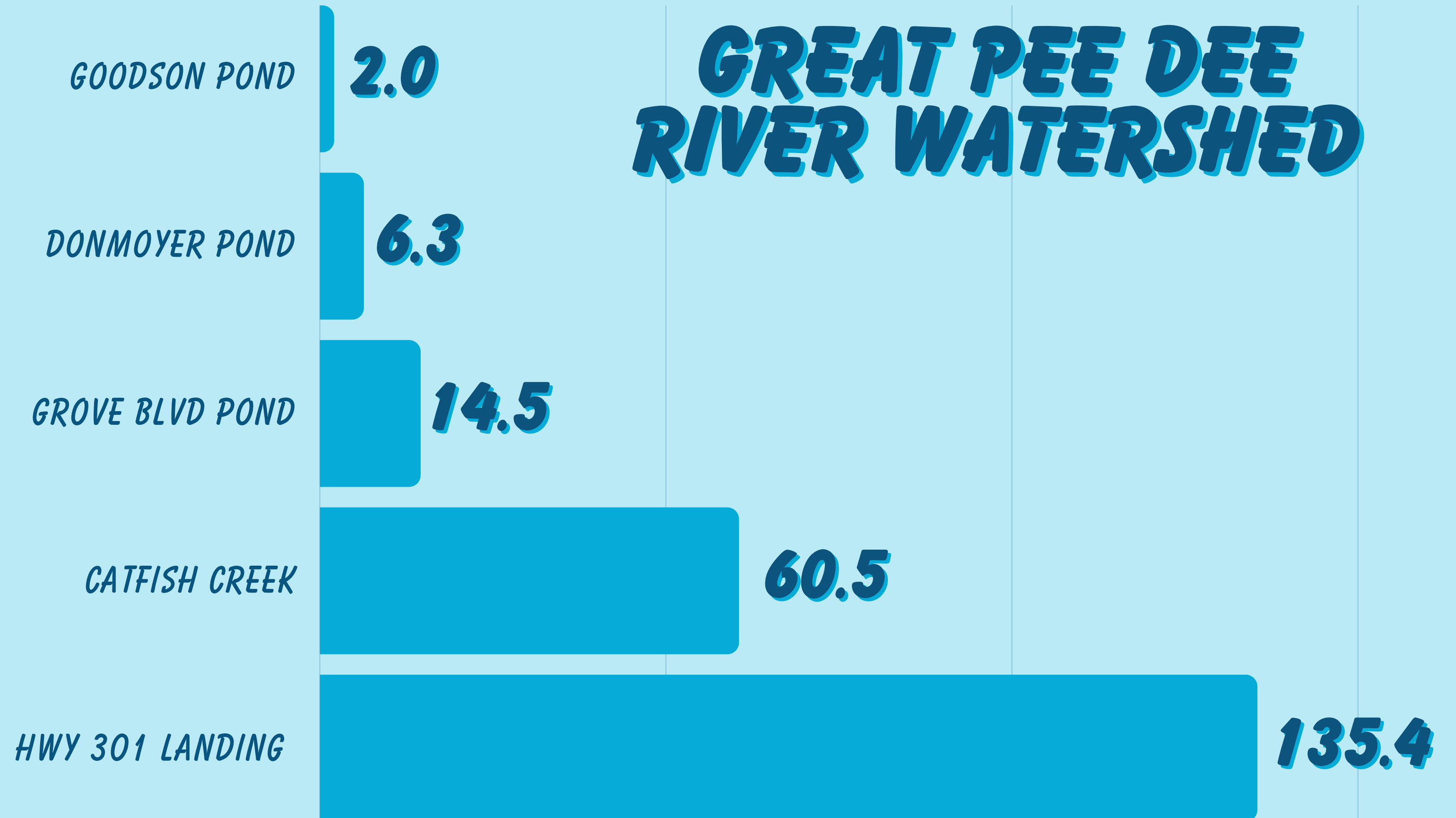
SC WACCAMAW RIVER WATERSHED



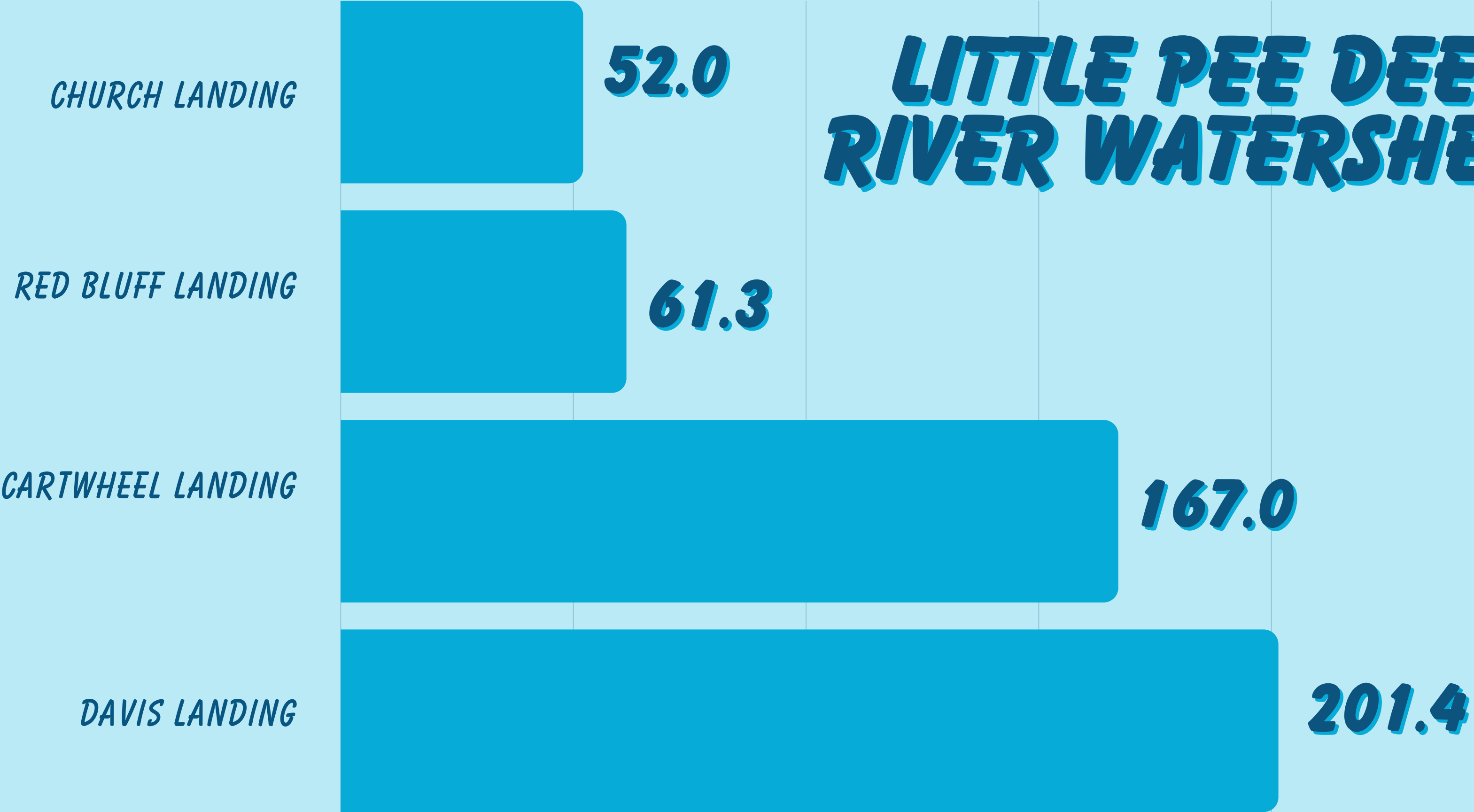
LUMBER RIVER WATERSHED



GREAT PEE DEE RIVER WATERSHED



LITTLE PEE DEE RIVER WATERSHED

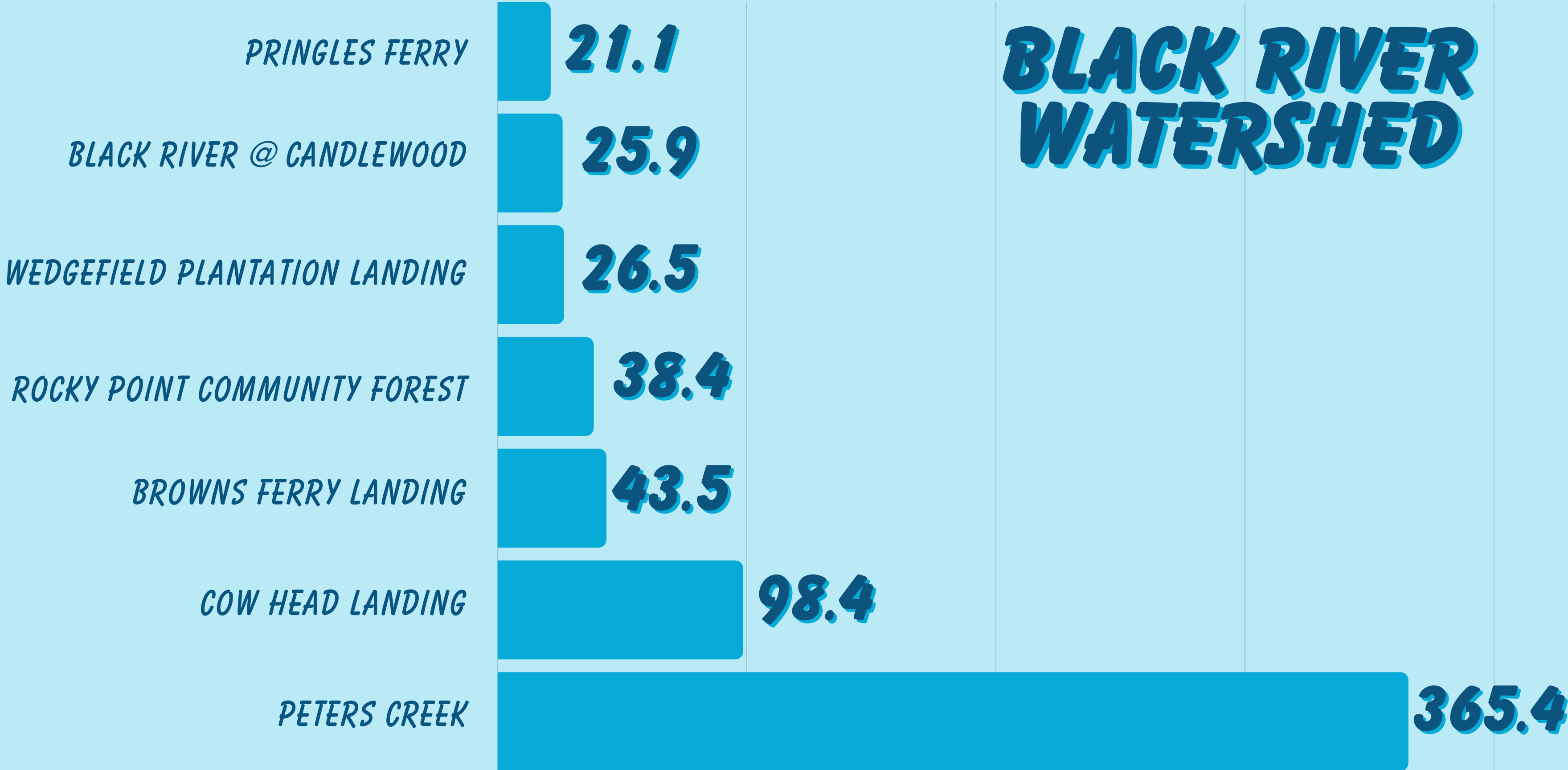


LYNCHES RIVER WATERSHED

LYNCHES RIVER COUNTY PARK

193.5

BLACK RIVER WATERSHED



SAMPIT RIVER WATERSHED

GEORGETOWN HARBOR WALK

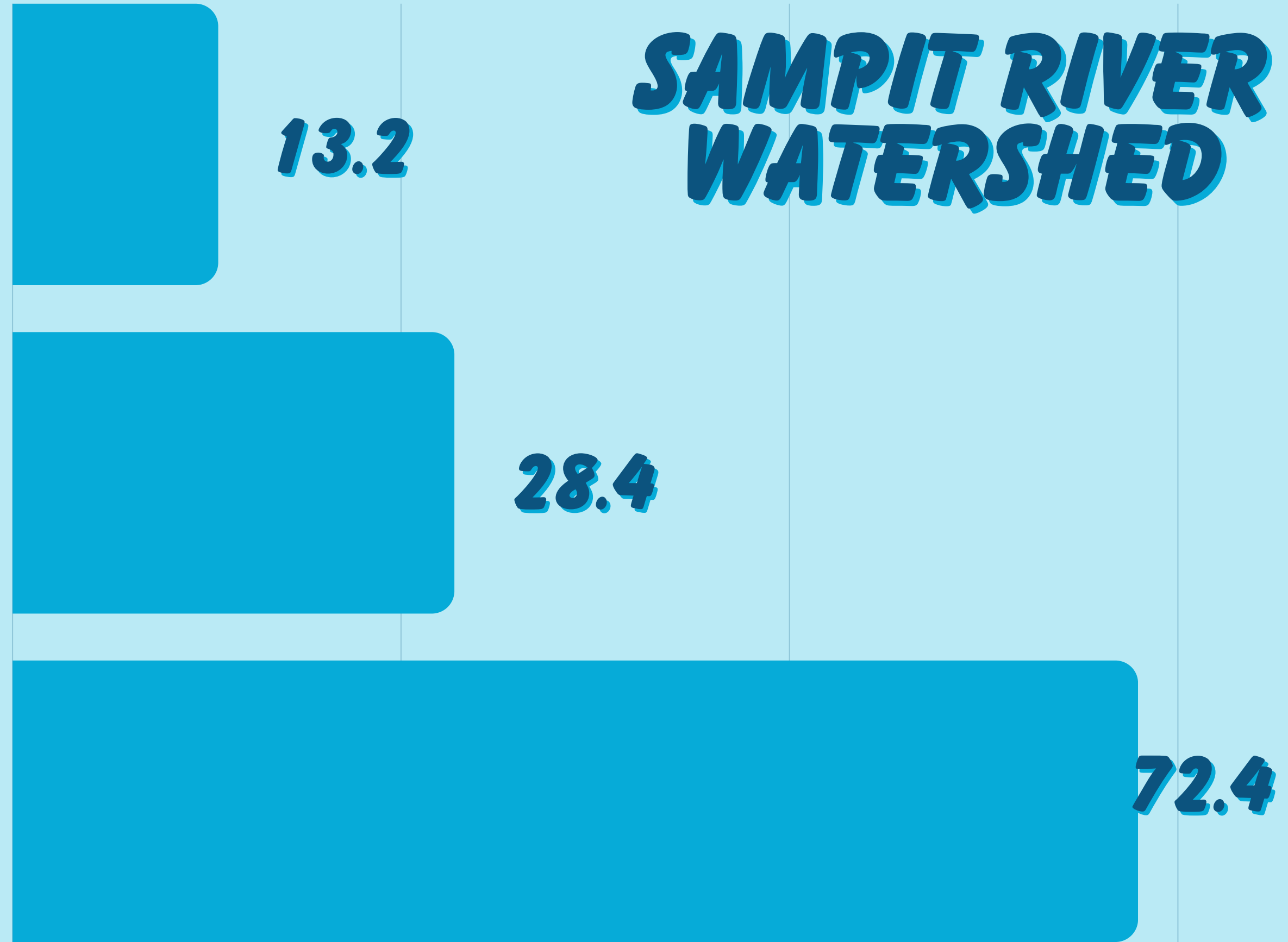
13.2

CARROLL ASHMORE CAMPBELL

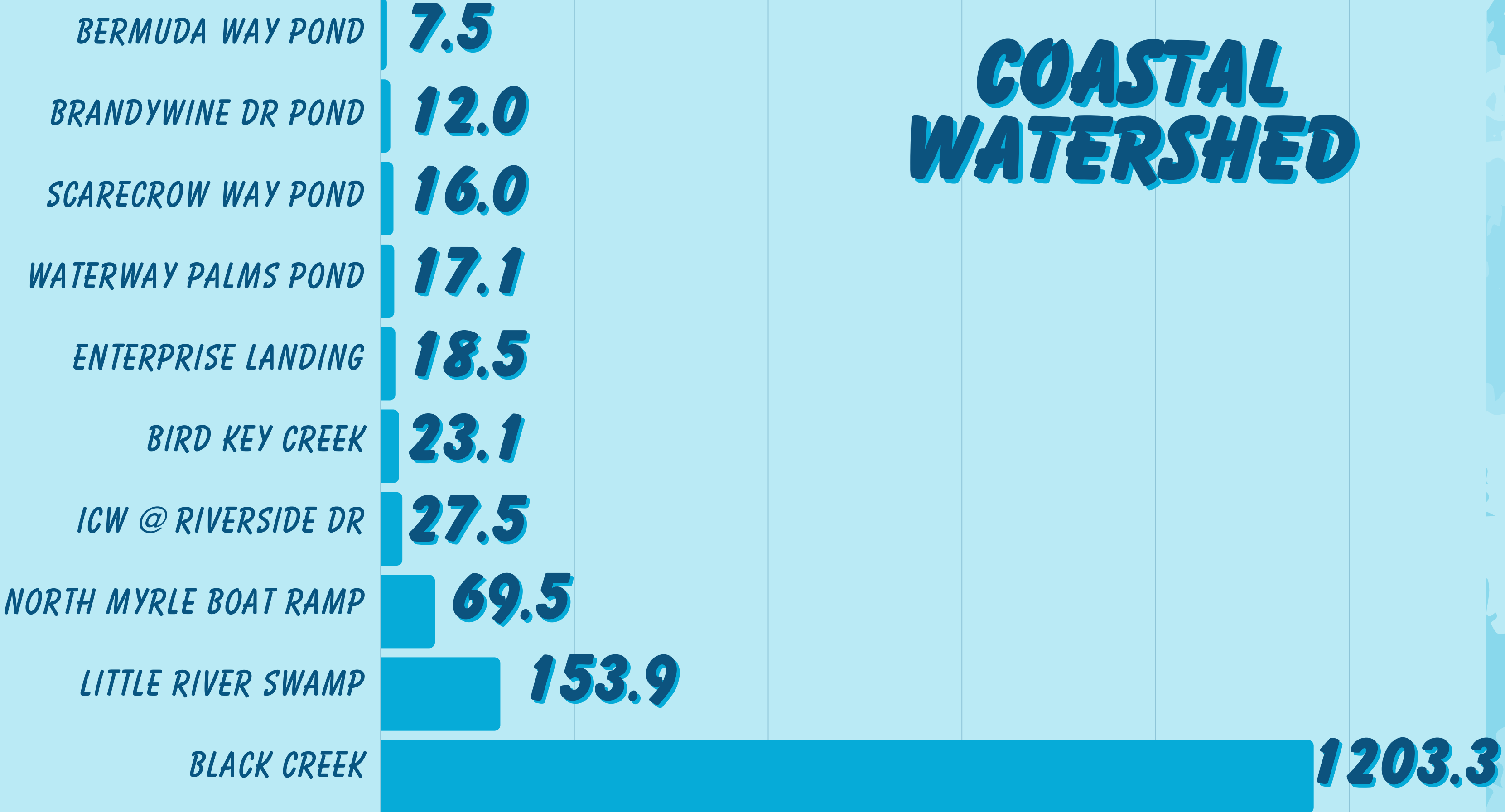
28.4

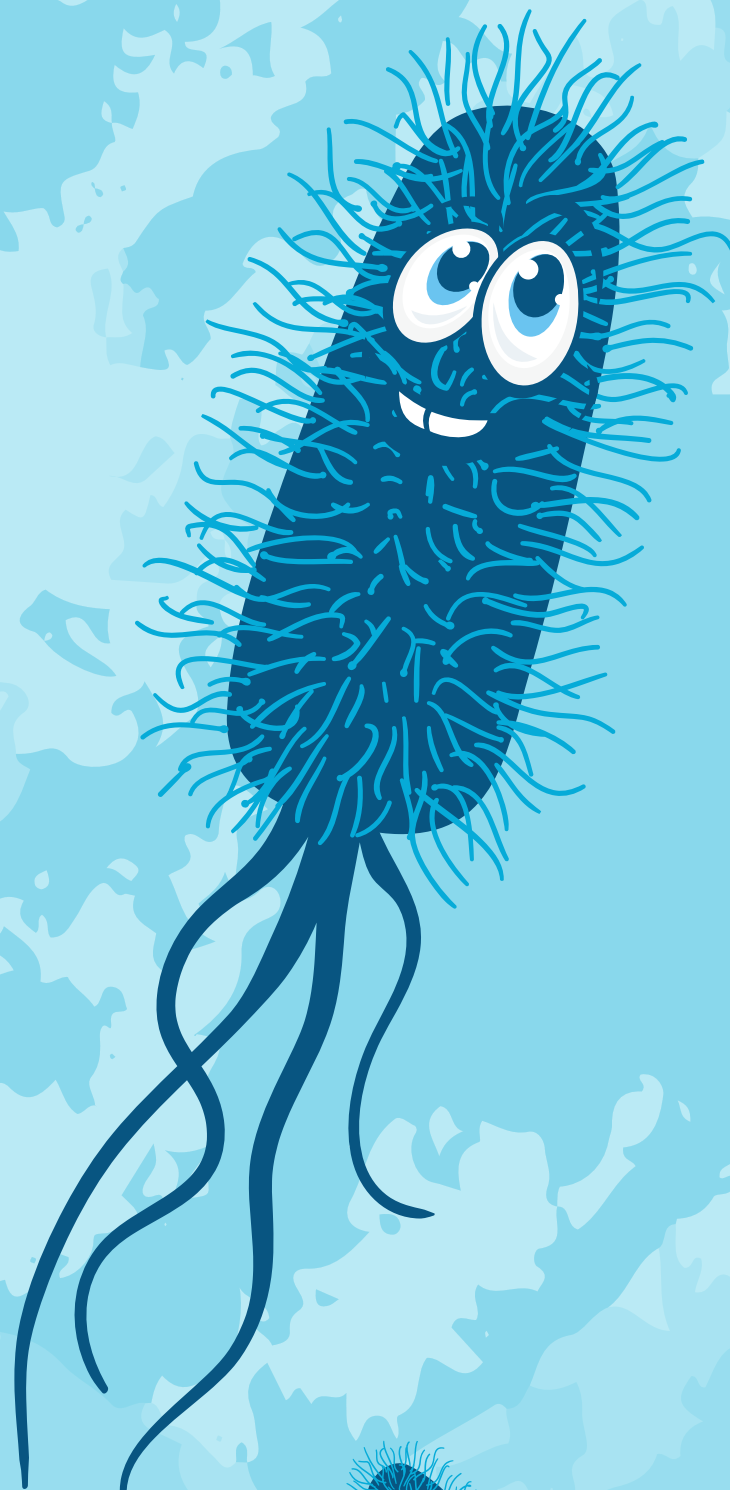
EAST BAY PARK LANDING

72.4

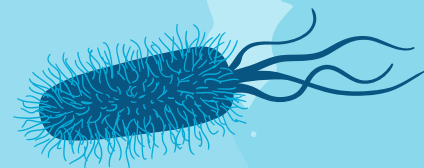
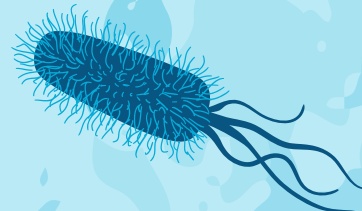
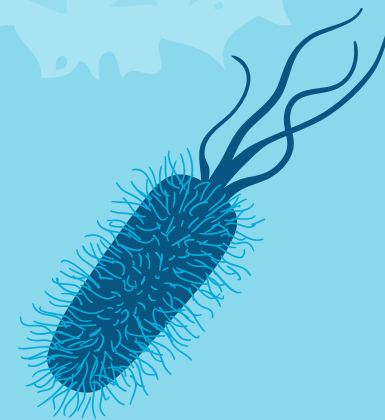
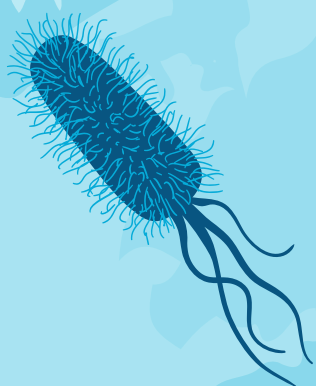
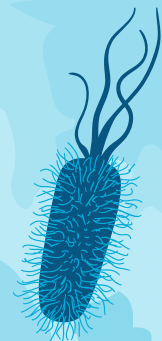
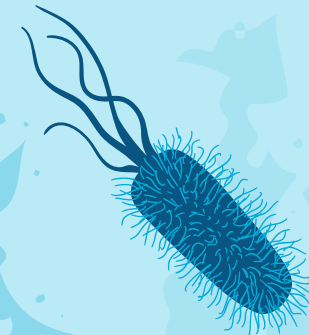
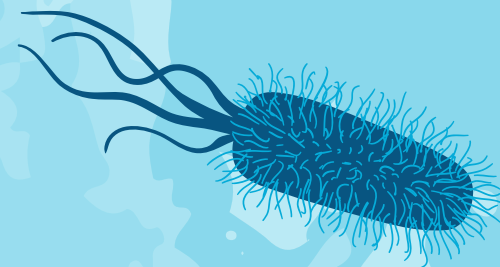
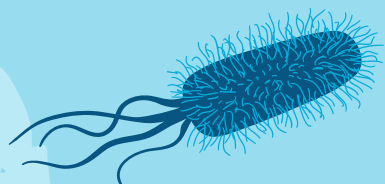


COASTAL WATERSHED





**WHAT ARE
THE NEXT
STEPS?**





WHAT DO OUR RESULTS MEAN?

LOW E. COLI CONCENTRATIONS ARE A GOOD INDICATOR THAT OUR WATERS ARE IN GOOD HEALTH.



WHAT DO OUR RESULTS NOT MEAN?

THESE VALUES ARE NOT A GUARANTEE. E. COLI CONCENTRATIONS CAN CHANGE RAPIDLY AND ARE NOT CONSTANT.

MAP OF SAMPLING RESULTS

6 SAMPLING SITES FAILED THE WATER QUALITY STANDARD

HALF MOON POND

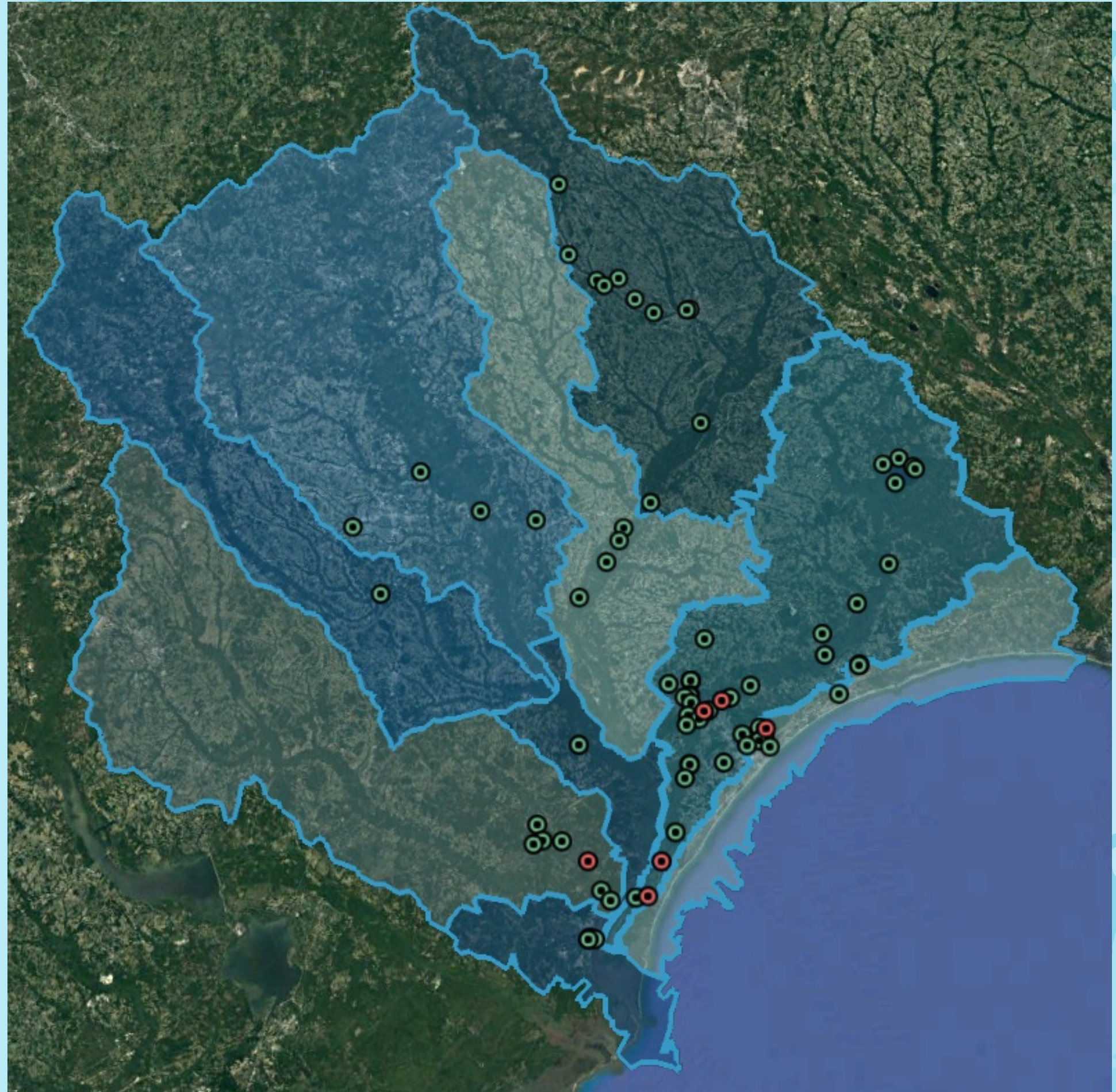
STERRITT SWAMP

SANDY ISLAND LANDING

WALK-TO-CAMPUS BRIDGE

PETERS CREEK LANDING

BLACK CREEK



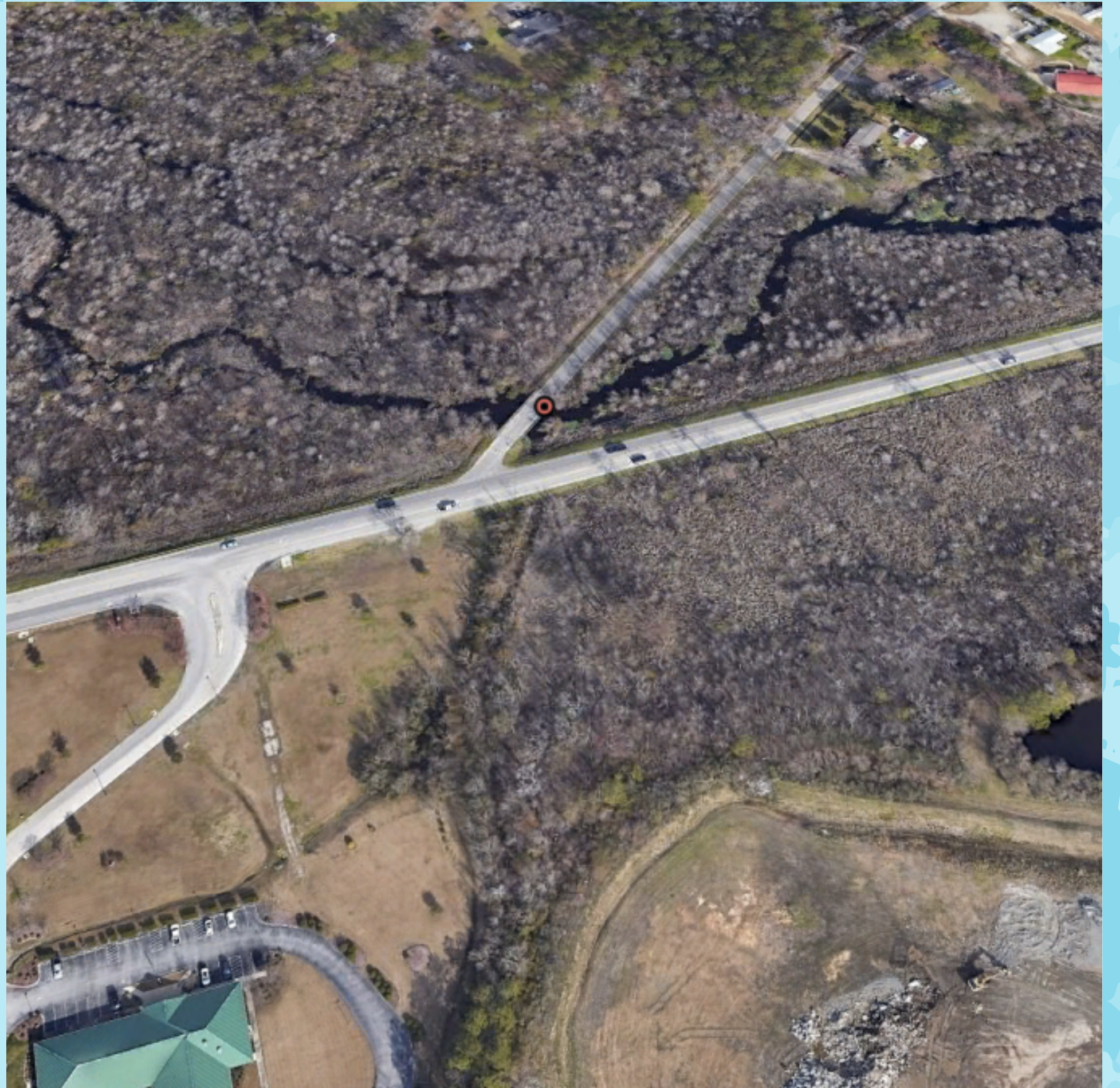
HALF MOON POND

275.5 MPN/100ML



STERRITT SWAMP

328.2 MPN/100ML



SANDY ISLAND LANDING

613.1 MPN/100ML



WALK-TO- CAMPUS BRIDGE

648.8 MPN/100ML



PETERS CREEK

365.4 MPN/100ML



BLACK CREEK

1203.3 MPN/100ML



NEXT STEPS FOR PARTICIPANTS

MARK YOUR CALENDARS

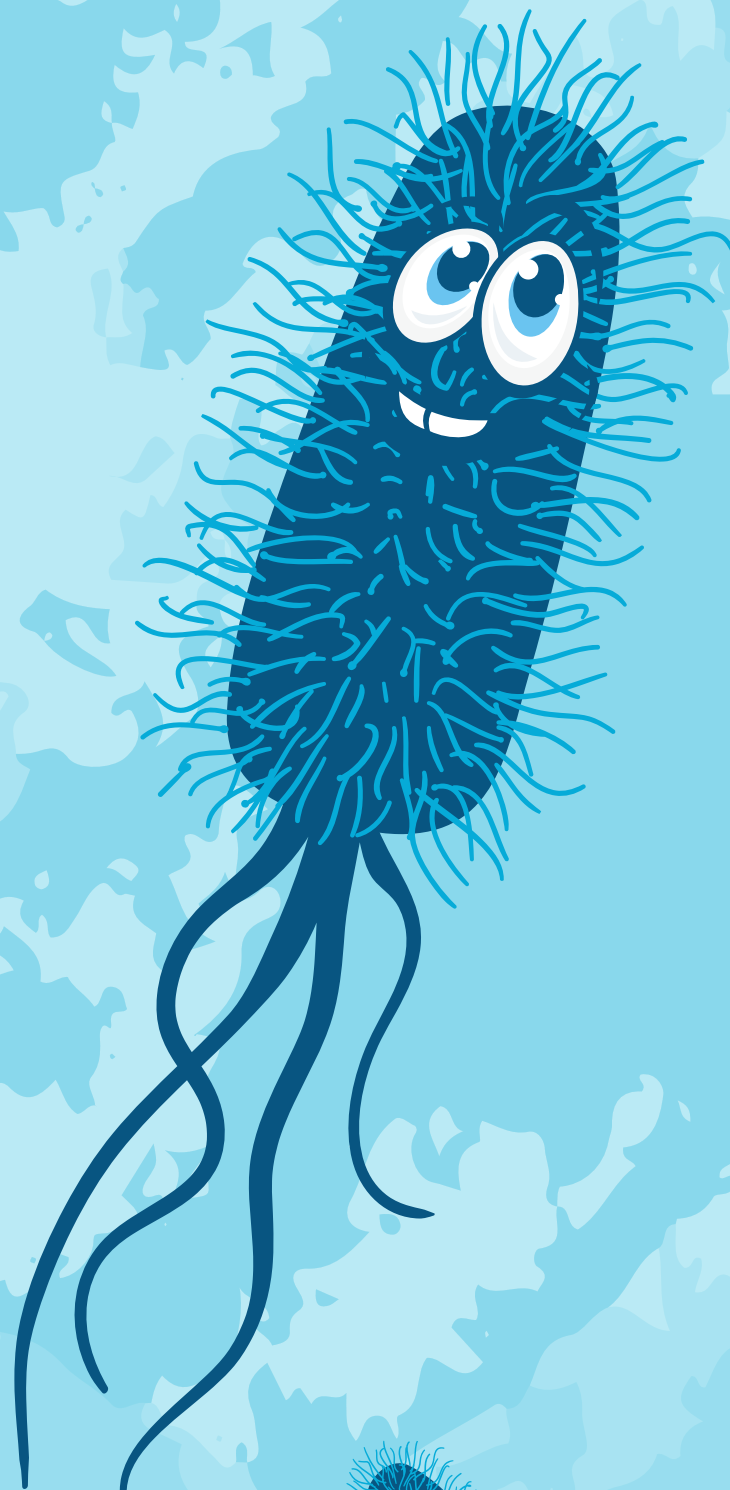
***MARK YOUR CALENDARS FOR THE
NEXT BACTERIA BLITZ ON
SEPTEMBER 14TH, 2024***

CONTINUE TO VOLUNTEER

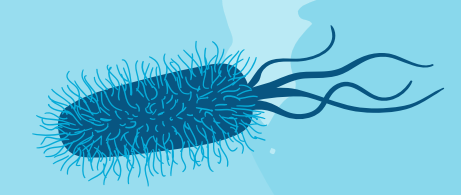
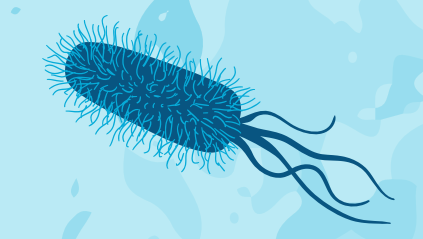
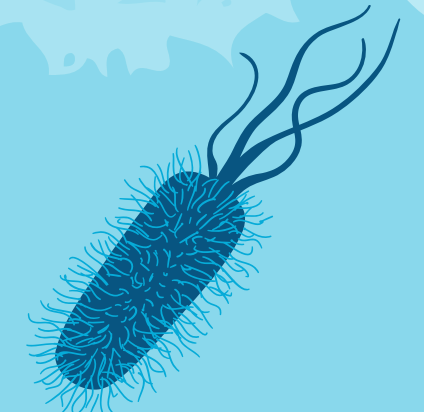
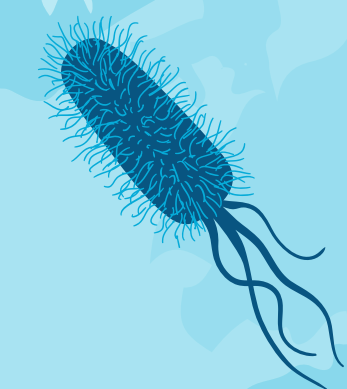
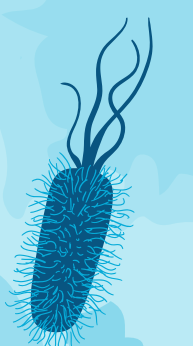
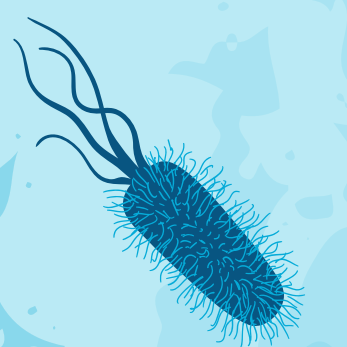
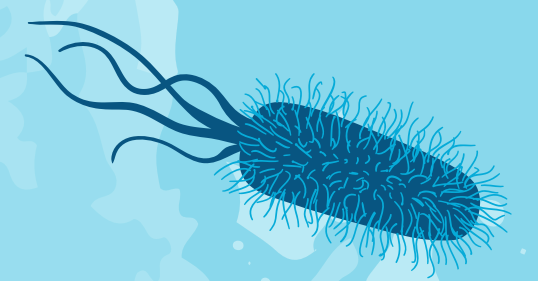
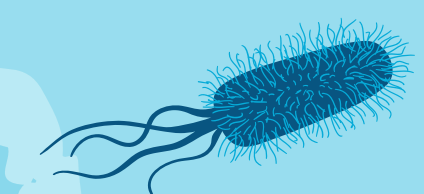
***CONTACT WINYAH RIVERS
ALLIANCE TO VOLUNTEER AT A
PROGRAM NEAR YOU!***

GET UPDATES AND INFO

***FOLLOW WINYAH RIVERS ON
SOCIAL MEDIA AND BECOME A
MEMBER!***



**THANK
YOU!!**



QUESTIONS?

